



TEXAS SCHOOL BREAKFAST REPORT CARD

2020 Edition



Baylor University

COLLABORATIVE ON HUNGER AND POVERTY
Texas Hunger Initiative

Acknowledgments

This report builds on a foundation of over ten years of work by Child Hunger Outreach Specialists at the Baylor Collaborative on Hunger and Poverty. It was prepared by a team consisting of Dr. Cara Cliburn Allen, Craig Nash, Katie Nye, and John Puder, and designed by Bethany Dieringer.

Dr. Jodien Johnson provided assistance with data.



A Note on the 2020 Edition

The year 2020 was not good for making plans. Many events, from Olympic Games to musical tours, that had the year “2020” stamped on them had to be delayed due to the COVID-19 pandemic.

Add the fourth biannual edition of the Texas School Breakfast Report Card to that list.

In addition to looking at trends, highlighting successes, and featuring stories of school districts and practitioners on the leading edge of operating the National School Breakfast Program, the 2020 edition compares district data from the 2016-2017 School Year with the 2018-2019 School Year. But we are mindful that the pandemic hasn't just delayed the publication of the School Breakfast Report Card; it has also altered the way we think about and approach publicly funded child nutrition programs. Because of that, the document you are holding in your hand or reading from a screen can feel a little like a “report from the Old World.”

At the same time, school districts who were using innovation to remove barriers to school meals *before* the pandemic may have actually been pointing the way for a post-pandemic world in which creativity and universal access to healthy nutrition will be the norm.

The Baylor Collaborative on Hunger and Poverty, along with our partners at Wal Mart, Dairy Max, and the No Kid Hungry campaign, believe that all children should have access to three healthy meals a day. Our entire team, from researchers, to those working on public food policy, to Child Hunger Outreach Specialists on the ground throughout Texas, is working to ensure that a future, final edition of this publication is a brief, remarkable statement that 100% of Texas children received the nutrition they needed every day of the previous year.

Until then, our plans will remain undeterred as we continue to develop and champion evidence-based solutions for ending food insecurity among children in Texas.

Table of Contents

5

Welcome

7

School Breakfast Program 101

A School Breakfast Primer
Why School Breakfast?

9

The 70% Goal

10

Most Improved

11

**What Contributed to Increases in School
Breakfast Participation?**

13

Where We Are Now

15

**Top 15 Texas School Districts With Highest
Potential Breakfast Gains**

16

Closing Note

18

Texas School Breakfast Participation

Technical Notes
Participation by District

Welcome

School meal programs are among the most reliable tools we have in the fight against childhood food insecurity in our country. Publicly funded and administered by the United States Department of Agriculture, they provide a consistent source of nutrition for over 30 million children every year. Each of these programs have varying levels of participation, with the National School Lunch Program being the most well-known and utilized. For various reasons, fewer students who qualify for and eat free and reduced-price school lunch also eat free and reduced-price school breakfast. But school districts across Texas are working diligently to change that.

Since we released our first School Breakfast Report Card eight years ago, we have seen school nutrition departments around the state employ techniques, some innovative and others deceptively simple, to make breakfast, the most important meal of the day, more accessible and appealing to students. A growing number of districts are utilizing the Community Eligibility Provision that allows schools to serve meals to their entire campus for free. Some are shifting the time and location of breakfast from before the first bell and in the cafeteria to after the first bell and in the classroom. Others are training their teachers and auxiliary staff to ask their students a very simple question when they arrive to school every morning: “Have you eaten breakfast yet?”

What almost all the schools that have shown improvement in their breakfast participation have in common is this—their increased participation wasn’t an accident or an anomaly. It was, rather, the result of a deliberate decision to do something different. At the Baylor Collaborative on Hunger and Poverty, we are committed to working with local school districts in developing strategic plans and models to make school breakfast as much a part of a student’s routine as school lunch.

Welcome Continued

We are incredibly grateful to all our partners who work alongside us to promote participation in the National School Breakfast Program. A special thanks to Share Our Strength's No Kid Hungry Campaign and Dairy Max, each of which provide grants to schools implementing alternative service models for breakfast. Also, our partners at the U.S. and Texas Department's of Agriculture, as well as Education Service Centers around the state provide much needed logistical and technical support. Lastly, none of our work to organize the systems that alleviate hunger would be possible without the generosity of the WalMart Foundation.

Working to solve the issues of hunger and poverty is challenging even in "normal" times. The events surrounding the pandemic of 2020, though, have added to that challenge. Regardless, we are committed to ending hunger in Texas through collaboration and cooperation.

Respectfully,

Jeremy Everett, Executive Director
Kathy Krey, Director of Research and Administration



A School Breakfast Primer



National School Breakfast Program

The National School Breakfast Program provides reimbursements for public and private nonprofit schools to serve children healthy breakfasts at or near the beginning of the school day. Reimbursement rates for each meal served vary between students who receive free, reduced, or paid meals. The School Breakfast Program is administered at the federal level by the Food and Nutrition Service of the United States Department of Agriculture, and on the state level by the Texas Department of Agriculture. The program is an investment into the lives of millions of Texas students who rely on school meals to provide their bodies the energy needed to begin their day.

Community Eligibility Provision

The Community Eligibility Provision, often referred to as CEP, gives schools and school districts in high poverty areas the option of serving free meals to all students without collecting household applications. Districts are reimbursed at rates based on a formula that takes into account area participation in other means-tested programs, like the Supplemental Nutrition Assistance Program (SNAP) and Temporary Assistance for Needy Families Program (TANF).



Alternative Service Models

Traditionally, school breakfast has been served in a cafeteria before the school day begins. Though this model has advantages, it limits participation to children who can make it to school early and can create unnecessary stigma around participating in the program. Alternative Service Models, or ASMs, such as Breakfast in the Classroom, Second Chance Breakfast, and Grab and Go from hallway kiosks, remove both barriers and stigma surrounding participation. Schools that invest in ASMs often see a rise in participation and, as a result, in their reimbursements.



Why School Breakfast?

For years, researchers, practitioners, and organizations working to increase food security among children in our country have touted the benefits of eating school breakfast. From reducing chronic absenteeism¹ to improving children's mental health,² eating a healthy breakfast has numerous positive health outcomes.

There is also an economic benefit to ensuring every child has access to a healthy breakfast. Increased participation means higher levels of reimbursement. This, in turn, allows districts to provide an appealing and nutritious options for their students every school day. It also boosts the employment of the millions of essential frontline food service workers, who have shown themselves to be unsung heroes in recent years.

But beyond health outcomes and economic benefits, there is another more basic reason that promoting school breakfast is essential:

Everyone has a right to three healthy meals a day.



The 70% Goal

Since beginning the work to promote and enhance school breakfast programs around the state, we have had a goal that 70% of all Texas students who regularly participate in the free and reduced-price lunch program will also participate in school breakfast.

272

Texas districts reached or exceeded the 70% Goal in 2016-2017

318

Texas districts reached or exceeded the 70% Goal in 2018-2019



Most Improved


Top 20 most improved districts from '16-'17 to '18-'19

School District	<u>% Increase</u>
Morton ISD	101.2%
Tornillo ISD	74.6%
Lockney ISD	67.3%
Hale Center ISD	59.4%
Assn. for Advancement of Mexican Americans	58.1%
Spurger ISD	52.8%
Olton ISD	52.0%
A.W. Brown-Fellowship	52.0%
Burkeville ISD	51.3%
Schleicher ISD	45.4%
East Austin College Prep	40.9%
Kermit ISD	40.8%
Post ISD	40.0%
Galena Park ISD	39.9%
Gateway Charter Academy	39.6%
Plains ISD	38.4%
West Rusk ISD	37.3%
Anahuac ISD	37.3%
Haskell CISD	36.2%
City View ISD	35.8%

16 of the top 20 most improved schools participate in the community eligibility provision.


What Contributed to Increases in School Breakfast Participation?

Plains ISD




Mary Parra has been the Food Service Director at Plains ISD for five years. When she began working in the district as the head meat cook, breakfast was served in the cafeteria and had participation rates between 140-180 students. She said that “every morning the primary students would congregate in the cafeteria dining area and eat breakfast before being dismissed for class.” Breakfasts would also be prepared and delivered to the high school campus cafeteria. Since implementing a Breakfast in the Classroom model on all campuses, the amount of free and reduced Eligible students who eat both lunch and breakfast has increased 38%. In the '18-'19 school year, Plains ISD actually had more Free and Reduced eligible average daily participation in breakfast than in lunch! Ms. Parra credits her cafeteria staff who puts forth a lot of effort every day in preparing grab-and-go meals for students, as well as the West Texas Food Service Coop, who do a great job of offering a variety of individually wrapped items for the program.

Anahuac ISD



In the 2016-2017 school year, Anahuac ISD had an average daily participation of 263 students who qualify for free or reduced meals eating school breakfast. Teonna Flowers, the Child Nutrition Director, saw that the main barrier was the early serving time for middle and high School students: “The students just weren’t eating at 7:30 in the morning. As a result, “she decided to add a Second Chance Breakfast at 8:30, but retain the original 7:30 serving time as well. All three of their campuses also serve Breakfast in the Classroom, with the high school students being served “brunch” at 9:30. By the 2018-2019 school year, average daily participation for free and reduced price eligible students increased to over 650!

Galena Park ISD



Between the '16-'17 and '18-'19 school years, Galena Park ISD, with a student population of over 20,000, saw an increase of more than 100% of average daily participation in school breakfast by all students. Child Nutrition Director Brian Aubin credits leadership from the top of the district with this incredible feat. “The Superintendent led the way, asking every campus principle to support school breakfast participation,” Aubin said. The result is that every lower campus receives breakfast in the classroom, and in the high school breakfast “grab and go” carts go from classroom to classroom offering reimbursable meals to each student. In addition to the massive increase in total students participating in school breakfast, the ratio of free and reduced eligible students participating in lunch who also participated in breakfast increased by 40%.

What Contributed to Increases in School Breakfast Participation? (Continued)

Buffalo ISD

When a principal and school counselor approached Courtney Rodell, Buffalo ISD's Child Nutrition Director, about the possibility of serving elementary students breakfast "family style" in the classroom, she jumped into action. Rodell procured a grant from the Action for Healthy Kids to purchase equipment such as cold bags and rollers to deliver food to each classroom. This change, coupled with Buffalo becoming a Community Eligibility District, helped increase their breakfast-to-lunch participation ratio from 67.6% to 86.3%. Rodell attributes success not just to the team who originated the idea but also to subsequent teachers and administrators who have come on board since the beginning and enthusiastically embrace the alternative service models.

Schleicher County ISD

In '16-'17, the breakfast to lunch participation ratio of free and reduced eligible students in Schleicher County ISD was 69.1%. At this time, elementary students were already being served breakfast in the classroom. When the BIC model was implemented in the middle and high schools, the increase in breakfast participation compared to lunch participation of the same group of eligible students increased to 114% in the '18-'19 school year. This means that more free and reduced eligible students participated in breakfast than participated in lunch. Child Nutrition Director Vikki Cathy reports that middle and high school students enjoy eating breakfast in the classroom and the social aspects that come from it.



Where We Are Now

In 2018-2019:



66.7%

of all FR Eligible Students who participate in school lunch also participated in school breakfast. This is a 4% increase from 2016-2017.



35%

of all public districts and charters have met the 70% benchmark, an increase of 3% from 2016-2017.

Texas could reach an additional

300,000

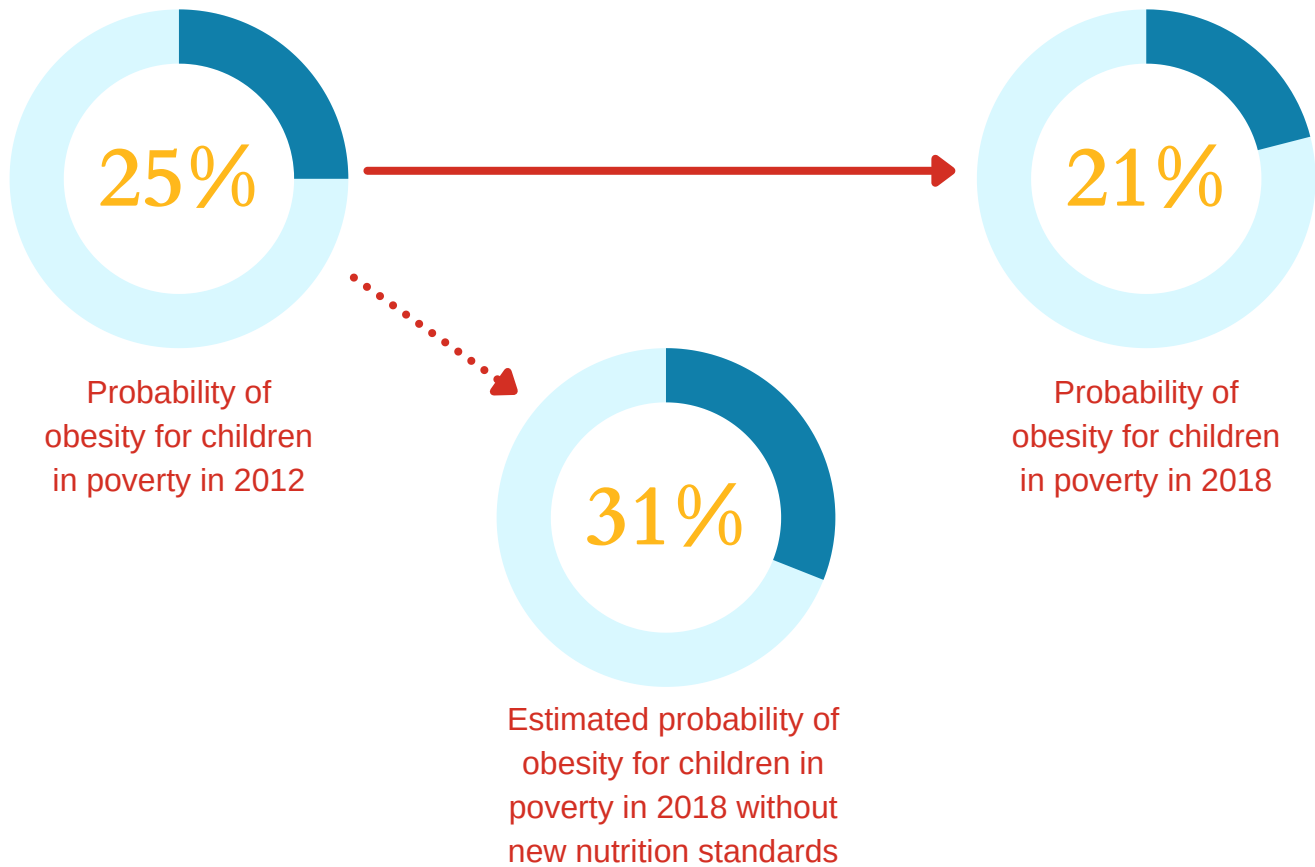
students, and generate an extra

\$86,000,000

into the economy if it met the 70% benchmark.

Healthy Hunger Free Kids Act

Improving Nutritional Outcomes of School Meals



Passed by Congress with bipartisan support and signed into law in 2010, the Healthy Hunger Free Kids Act aims to address the rising obesity epidemic among America's youth. It provides funding for equipment and training of school nutrition staff, as well as updated nutritional standards for school meals. Those standards reduced sodium and sugar content in meals, and increased the consumption of healthy fruits, vegetables and whole grains.

The results?

The health and academic outcomes of the Healthy Hunger Free Kids Act have been mostly positive, providing an even greater impetus for increasing participation in the School Breakfast Program. Research shows "that policy targeting student nutrition, particularly through the increased provision of breakfast, may be one of the more cost-effective policy approaches to improve student learning outcomes and test scores."

Top 15 Texas School Districts With the Highest Potential Breakfast Gains

District Name	FR Students in SBP per 100 in NSLP	Additional Students Daily if 70% Reached	Additional Annual Reimbursement Income if 70% Reached
Northside ISD-San Antonio	46.4%	9,798	\$2,918,400
Cypress-Fairbanks ISD	51.6%	8,828	\$2,596,821
North East ISD	40.8%	7,922	\$2,311,080
Fort Bend ISD	35.8%	7,305	\$2,075,109
Mesquite ISD	39.5%	7,230	\$2,077,904
Fort Worth ISD	57.2%	6,869	\$2,021,095
Pasadena ISD	50.4%	6,753	\$1,882,361
Katy ISD	35.4%	6,635	\$1,905,361
Arlington ISD	49.6%	6,453	\$1,868,500
Alief ISD	49.7%	6,170	\$1,774,918
Garland ISD	50.9%	5,705	\$1,645,067
Klein ISD	42.7%	4,748	\$1,374,075
Killeen ISD	48.8%	4,535	\$1,337,206
Aldine ISD	61.2%	4,237	\$1,233,211
Carrollton-Farmers Branch ISD	36%	3,995	\$1,149,013

Closing Note

Children and teens need a healthy breakfast to start the day. Reports like this one illuminate the nutritional and academic reasons for this. But the ultimate impetus for promoting school breakfast is that no child should ever begin their day hungry. A child's breakfast should not be dependent on finances, logistics, stigma, or bureaucracy. We cannot have children go hungry because there is not enough funds in their school account. A late bus or a cafeteria across campus cannot be a reason. A teen should not have to consider if a breakfast sandwich is worth the risk of being stigmatized. A school district's reliance on Free/Reduced applications for funding cannot be why a district opts out of offering all students a breakfast at no cost.

Yet every school day, children start their day hungry because of one of these reasons. We can do better. We must do better. We know that alternative breakfast models increase participation rates. Elementary school students do better on multiple measures when they start the day eating with their peers in the classroom. It can be a cool thing to do for a Middle School student to swing by a grab-n-go cart for a quick smoothie on the way to class. High School students can eat breakfast at a decent hour with "second chance breakfast". Students living in rural communities can enjoy breakfast during their long bus rides. We know how to do this.

Living through the trauma of the COVID-19 pandemic placed unprecedented strains on our schools. While many functions could be managed virtually, we cannot feed children and teens virtually. As schools slowly reopened and social distancing demands created the need for breakfast in the classroom, districts learned the power of Breakfast in the Classroom. A milk stain on new carpeting became a small price for feeding hungry children. A change in bell schedules was a challenge that could now be overcome. And having child nutrition staff move from behind the protection of a cafeteria counter out into the school is indeed possible and even advantageous.

Closing Note Continued

Finally, I want to acknowledge and thank the child nutrition professionals who found the courage and dedication to embrace change and prioritized the needs of children and teens. When schools closed, nutrition staff placed the needs of students above their personal safety concerns. They came out from behind the counters to stand on curbs delivering meals to hungry children. The next School Breakfast Report Card will reveal the results of these selfless acts of care. It is up to us to continue to provide them all the available tools to feed children and teens a healthy breakfast by removing the barriers of stigma, finances, and bureaucracy. For community members interested in advocating for the nutritional needs of local school children, or schools seeking better ways to feed all their students, we have Child Hunger Outreach Specialists across Texas eager to help. Visit texashunger.org to locate one.

John Puder, Statewide Child Hunger Manager



Texas School Breakfast Participation Technical Notes

School Breakfast Participation Tables

The next section of the School Breakfast Report Card provides breakfast participation data for Texas counties and school districts. This dataset represents school years 2013-2014 and 2016-2017 and lists public and charter schools. Data was retrieved from the Texas Department of Agriculture (TDA) through Public Information Requests. Below, you will find descriptions of the data indicators in the table, including how we define them and how they were calculated.

FR Eligible %

Free and Reduced-Price Eligible. This is the percentage of students eligible for free or reduced-price (FR) meals. This data is based on district-level October enrollment figures.

FR Breakfast ADP (#)

Free and Reduced-Price Breakfast Average Daily Participation. This indicator is the number of students participating in FR school breakfast during a given school year. This was calculated by dividing the total number of FR breakfasts served per district by the total number of operating days. County-level cells sum up district-level FR Breakfast ADP.

FR Students in SBP per 100 in NSLP (%)

Free and Reduced-Price Students in the School Breakfast Program (SBP) per 100 in the National School Lunch Program (NSLP). The Food Research and Action Center sets a national goal of reaching 70 FR eligible students with breakfast for every 100 participating in FR school lunch. Put another way, this is the ratio of FR breakfast students to FR lunch students (FR breakfast ADP / FR lunch ADP).

Additional Students Served if 70 percent Reached (#)

The number of additional students the district or county could reach with breakfast if 70 percent of students participating in free or reduced-price (FR) lunch were served breakfast. A "-" in this column indicates the district or county has already met the 70 percent benchmark.

Additional Dollars if 70 percent Reached (\$)

Additional reimbursements the district or county would accrue if 70 percent of students participating in free or reduced-price (FR) lunch also participate in breakfast. A "-" in this column indicates the district or county has already met the 80 percent benchmark. We use "the breakfast calculator method," which applies the current (2017) percentage of free students and percentage of reduced students to the total number of Additional Students Reached. We take the number of "additional" students eligible for free meals and the number of "additional" students eligible for reduced-price meals and multiply each by respective reimbursement rates and total operating days.

Change in Ratio of SBP to NSLP Participation

The year on year change in the ratio of FR SBP Students to FR NSLP Students. An increase in this percentage indicates improved breakfast participation.

Technical Note

Data represented here were collected from TDA and include enrollment and claim data for the months of June through July for years 2013-2014 and 2016-2017. Additional information can be made available upon request. An asterisk * indicates missing data from the state agency (and/or indicates an inability to make a calculation due to missing data).

Participation by District

District	2016-2017			2018-2019			Change in Ratio of SBP to NSLP Participation	Additional Students if 70% Met	Additional Dollars if 70% Met
	% FR Eligible	FR Breakfast ADP	FR Students in SBP per 100 in NSLP	% FR Eligible	FR Breakfast ADP	FR Students in SBP per 100 NSLP			
A PLUS CHARTER SCHOOLS, Inc. DBA A + ACADEMY	93.7%	271	35.0%	83.2%	391	40.2%	5.2%	290	\$ 81,989
A PLUS CHARTER SCHOOLS, INC. DBA INSPIRED VISION ACADEMY	89.3%	285	35.7%	68.8%	543	61.3%	25.6%	77	\$ 21,945
A.R.I.S.E.	*	*	*	53.9%	261	*		*	*
A.W. BROWN-FELLOWSHIP	77.7%	658	50.8%	87.0%	1,201	102.6%	51.8%	-	-
ABBOTT ISD	25.8%	35	71.8%	28.2%	34	75.6%	3.8%	-	-
ABERNATHY ISD	53.6%	253	93.3%	53.6%	252	104.9%	11.6%	-	-
ABILENE ISD	67.9%	4,876	52.6%	70.0%	4,642	52.1%	-0.5%	1,591	\$ 463,891
ACADEMY ISD	48.2%	251	59.1%	53.7%	287	60.6%	1.5%	45	\$ 12,977
ACADEMY OF ACCELERATED LEARNING INC	100.0%	374	64.2%	100.0%	173	63.8%	-0.4%	17	\$ 10,026
ACADEMY OF AMERICA DBA ACADEMY OF DALLAS	100.0%	326	84.5%	100.0%	345	86.6%	2.1%	-	-
ACADEMY OF AMERICA DBA BEXAR COUNTY ACADEMY	100.0%	214	61.2%	100.0%	229	73.0%	11.8%	-	-
ACADEMY OF SKILLS AND KNOWLEDGE	35.2%	104	31.1%	52.6%	166	32.4%	1.3%	193	\$ 54,951
ACCELERATED INTERMEDIATE ACADEMY	95.1%	148	67.2%	96.8%	135	68.0%	0.8%	4	\$ 1,152
ADRIAN ISD	77.5%	39	68.5%	68.6%	33	56.7%	-11.8%	8	\$ 2,079
ADVANTAGE ACADEMY	74.0%	227	26.0%	77.4%	235	31.1%	5.1%	294	\$ 82,859
AGUA DULCE ISD	67.6%	200	105.6%	84.9%	171	94.6%	-11.0%	-	-
ALAMO HEIGHTS ISD	20.5%	325	49.9%	20.7%	411	61.5%	11.6%	57	\$ 16,428
ALBA-GOLDEN ISD	53.5%	186	61.9%	61.8%	206	59.8%	-2.1%	35	\$ 10,221
ALBANY ISD	42.1%	60	42.6%	36.0%	63	53.2%	10.6%	20	\$ 5,721
ALDINE ISD	82.3%	30,518	61.6%	84.7%	29,307	61.2%	-0.4%	4,237	\$ 1,223,211
ALEDO ISD	13.4%	211	41.6%	15.1%	212	35.5%	-6.1%	205	\$ 60,448
ALICE ISD	87.6%	2,674	70.0%	100.0%	2,854	66.9%	-3.1%	133	\$ 35,052
ALIEF ISD	82.6%	14,593	48.4%	85.1%	15,147	49.7%	1.3%	6,170	\$ 1,774,918
ALIEF MONTESSORI COMMUNITY SCHOOL	63.3%	17	16.8%	72.9%	15	14.3%	-2.5%	60	\$ 16,468
ALLEN ISD	15.9%	475	26.7%	21.7%	712	32.4%	5.7%	826	\$ 233,793
ALPHA CHARTER SCHOOL	88.3%	43	48.5%	*	*	*		*	*
ALPINE ISD	51.3%	158	39.8%	51.6%	150	41.0%	1.2%	106	\$ 30,945
ALTO ISD	73.6%	156	52.1%	71.7%	165	55.2%	3.1%	44	\$ 12,490
ALVARADO ISD	65.8%	827	47.2%	64.8%	738	42.5%	-4.7%	479	\$ 133,336
ALVIN ISD	52.0%	4,368	49.7%	51.7%	4,566	48.0%	-1.7%	2,098	\$ 591,781
ALVORD ISD	36.2%	120	58.6%	36.0%	112	53.6%	-5.0%	34	\$ 9,625
AMARILLO ISD	70.1%	12,872	75.6%	67.6%	11,998	71.1%	-4.5%	-	-
AMBASSADORS PREPARATORY ACADEMY	84.8%	83	41.0%	87.2%	73	32.6%	-8.4%	83	\$ 24,885
AMHERST ISD	79.5%	51	52.4%	96.5%	69	65.0%	12.6%	5	\$ 1,526
AMIGOS POR VIDA--FRIENDS FOR LIFE	100.0%	144	30.1%	100.0%	143	29.9%	-0.2%	192	\$ 57,158
AMIKIDS RIO GRANDE VALLEY	*	*	*	100.0%	11	100.1%		-	-
ANAHUAC ISD	54.1%	263	49.3%	90.9%	652	86.6%	37.3%	-	-
ANDERSON-SHIRO CONS ISD	42.8%	154	58.3%	48.9%	150	54.9%	-3.4%	41	\$ 12,040
ANDREWS ISD	42.9%	517	42.7%	42.8%	526	43.7%	1.0%	317	\$ 89,141
ANGLETON ISD	63.1%	1,843	58.2%	92.9%	2,316	51.0%	-7.2%	865	\$ 251,403
ANNA ISD	42.9%	427	44.4%	44.4%	592	50.3%	5.9%	231	\$ 64,227
ANSON ISD	66.1%	277	81.8%	63.9%	292	84.9%	3.1%	-	-
ANTHONY ISD	91.9%	738	104.3%	97.8%	748	106.5%	2.2%	-	-
ANTON ISD	73.3%	171	106.0%	100.0%	190	99.7%	-6.3%	-	-
APPLE SPRINGS ISD	56.9%	61	79.3%	55.4%	68	83.8%	4.5%	-	-
AQUILLA ISD	47.8%	64	66.4%	64.2%	116	83.4%	17.0%	-	-
ARANSAS COUNTY ISD	61.4%	899	55.1%	100.0%	1,043	48.0%	-7.1%	477	\$ 140,695

District	2016-2017			2018-2019			Change in Ratio of SBP to NSLP Participation	Additional Students if 70% Met	Additional Dollars if 70% Met
	% FR Eligible	FR Breakfast ADP	FR Students in SBP per 100 in NSLP	% FR Eligible	FR Breakfast ADP	FR Students in SBP per 100 NSLP			
ARANSAS PASS ISD	76.7%	448	41.7%	100.0%	499	40.2%	-1.5%	370	\$ 107,158
ARCHDIOCESE OF GALVESTON-HOUSTON	*	*	*	55.8%	150	31.9%		179	\$ 50,287
ARCHER CITY ISD	46.9%	100	79.4%	56.3%	112	66.6%	-12.8%	6	\$ 1,555
ARGYLE ISD	12.2%	48	54.3%	14.9%	75	59.9%	5.6%	13	\$ 3,608
ARISTOI CLASSICAL ACADEMY, INC.	*	*	*	23.1%	36	36.0%		34	\$ 9,501
ARLINGTON CLASSIC ACADEMY	18.8%	48	58.9%	20.2%	132	60.6%	1.7%	21	\$ 5,668
ARLINGTON ISD	68.2%	16,387	49.8%	69.8%	15,713	49.6%	-0.2%	6,453	\$ 1,868,500
ARP ISD	59.8%	185	51.6%	56.6%	186	55.8%	4.2%	47	\$ 13,579
ARROW ACADEMY-LEADERSHIP EDUCATION FOUNDATION	81.3%	165	55.1%	*	*	*		*	*
ARROW CHILD AND FAMILY MINISTRIES OF TEXAS	*	*	*	100.0%	30	99.9%		-	-
ASPERMONT ISD	63.1%	52	72.3%	50.4%	49	71.9%	-0.4%	-	-
ASSN. FOR THE ADVANCEMENT OF MEXICAN AMERICANS	79.1%	155	34.2%	94.6%	509	92.3%	58.1%	-	-
ATASCOSA COUNTY JUVENILE JUSTICE CENTER	*	*	*	90.3%	18	103.6%		-	-
ATHENS ISD	77.2%	917	50.8%	75.8%	1,014	57.0%	6.2%	231	\$ 64,650
ATLANTA ISD	68.4%	608	67.8%	68.3%	620	66.8%	-1.0%	29	\$ 8,354
AUBREY ISD	31.6%	206	52.6%	31.0%	250	51.1%	-1.5%	92	\$ 25,594
AUSTIN ACHIEVE PUBLIC SCHOOLS	88.5%	186	39.7%	*	*	*		*	*
AUSTIN ACHIEVE PUBLIC SCHOOLS, INC.	*	*	*	95.3%	1,084	90.2%		*	*
AUSTIN ISD	55.4%	20,742	61.1%	56.4%	21,776	68.7%	7.6%	407	\$ 117,014
AUSTWELL-TIVOLI ISD	61.2%	42	71.6%	100.0%	58	65.2%	-6.4%	4	\$ 1,292
AVALON ISD	54.3%	63	44.0%	70.8%	58	41.1%	-2.9%	41	\$ 11,429
AVERY ISD	54.9%	101	73.5%	64.5%	166	75.5%	2.0%	-	-
AVINGER ISD	79.5%	59	68.6%	82.8%	63	75.9%	7.3%	-	-
AXTELL ISD	51.3%	150	51.2%	55.0%	185	59.2%	8.0%	34	\$ 9,493
AZLE ISD	50.6%	1,519	68.8%	46.9%	1,482	70.8%	2.0%	-	-
BAIRD ISD	67.2%	139	91.4%	68.9%	113	76.5%	-14.9%	-	-
BAKERRIPLEY	*	*	*	100.0%	753	85.3%		-	-
BALLINGER ISD	59.8%	220	53.9%	65.0%	239	67.9%	14.0%	7	\$ 2,063
BALMORHEA ISD	80.5%	108	103.7%	80.9%	117	119.1%	15.4%	-	-
BANDERA ISD	53.7%	429	49.6%	57.5%	460	52.4%	2.8%	155	\$ 45,857
BANGS ISD	55.0%	184	49.5%	61.5%	210	53.2%	3.7%	66	\$ 19,443
BANQUETE ISD	74.1%	431	84.4%	79.1%	413	82.9%	-1.5%	-	-
BARBERS HILL ISD	22.8%	249	63.7%	25.8%	352	66.5%	2.8%	18	\$ 5,215
BARTLETT ISD	74.2%	171	72.0%	67.7%	136	65.8%	-6.2%	9	\$ 2,560
BASTROP ISD	70.0%	2,111	40.3%	74.1%	3,257	59.5%	19.2%	574	\$ 167,968
BAY CITY ISD	78.6%	1,781	85.9%	100.0%	1,978	76.0%	-9.9%	-	-
BCFS HEALTH AND HUMAN SERVICES	*	*	*	100.0%	1,215	101.4%		-	-
BEAUMONT ISD	74.2%	7,025	61.8%	75.9%	6,963	63.6%	1.8%	704	\$ 202,733
BECKVILLE ISD	36.0%	59	45.0%	40.7%	86	59.1%	14.1%	16	\$ 4,606
BEEVILLE ISD	79.9%	763	38.9%	100.0%	884	37.5%	-1.4%	765	\$ 219,204
BELL COUNTY JUVENILE BOARD	*	*	*	100.0%	31	101.6%		-	-
BELLEVUE ISD	55.7%	27	48.7%	51.2%	25	61.3%	12.6%	4	\$ 980
BELLS ISD	42.3%	152	64.1%	43.7%	168	66.7%	2.6%	8	\$ 2,302
BELLVILLE ISD	49.4%	391	45.1%	49.0%	355	43.1%	-2.0%	222	\$ 64,576
BELTON ISD	46.8%	2,243	53.3%	53.2%	2,639	55.8%	2.5%	674	\$ 194,922
BEN BOLT-PALITO BLANCO ISD	67.0%	269	84.4%	84.6%	324	98.1%	13.7%	-	-
BEN YEHUDA ACADEMY	12.3%	14	*	12.8%	12	*		*	*
BENAVIDES ISD	92.9%	272	97.6%	100.0%	253	93.6%	-4.0%	-	-
BENJAMIN ISD	65.0%	49	99.6%	68.3%	53	86.4%	-13.2%	-	-
BEXAR COUNTY JUVENILE PROBATION DEPARTMENT	*	*	*	100.0%	136	101.5%		-	-
BIG SANDY ISD-BIG SANDY	71.1%	195	54.5%	70.1%	194	57.9%	3.4%	41	\$ 11,793
BIG SANDY ISD-DALLARDSVILLE	47.0%	143	79.4%	51.5%	168	77.3%	-2.1%	-	-
BIG SPRING ISD	69.0%	1,725	81.6%	68.6%	1,589	77.5%	-4.1%	-	-
BIRDVILLE ISD	56.0%	3,884	38.6%	59.8%	4,019	39.0%	0.4%	3,201	\$ 931,043
BISHOP CONS ISD	60.0%	619	78.2%	100.0%	927	70.6%	-7.6%	-	-

District	2016-2017			2018-2019			Change in Ratio of SBP to NSLP Participation	Additional Students if 70% Met	Additional Dollars if 70% Met
	% FR Eligible	FR Breakfast ADP	FR Students in SBP per 100 in NSLP	% FR Eligible	FR Breakfast ADP	FR Students in SBP per 100 NSLP			
BLANCO ISD	48.5%	178	47.0%	46.0%	153	44.0%	-3.0%	91	\$ 26,223
BLAND ISD	55.3%	184	64.1%	61.5%	182	60.8%	-3.3%	28	\$ 7,594
BLANKET ISD	100.0%	102	66.4%	69.8%	56	57.0%	-9.4%	13	\$ 3,824
BLOOMING GROVE ISD	67.5%	172	46.0%	74.9%	224	55.0%	9.0%	61	\$ 17,662
BLOOMINGTON ISD	81.5%	425	74.7%	100.0%	415	65.7%	-9.0%	27	\$ 7,994
BLUE RIDGE ISD	57.3%	171	54.4%	56.7%	164	50.2%	-4.2%	65	\$ 18,063
BLUFF DALE ISD	36.9%	16	58.5%	37.5%	39	72.5%	14.0%	-	-
BLUM ISD	62.2%	95	52.9%	59.5%	143	78.7%	25.8%	-	-
BOB HOPE SCHOOL	93.3%	149	23.9%	99.7%	512	46.3%	22.4%	262	\$ 75,625
BOERNE ISD	18.8%	281	29.5%	20.5%	285	25.9%	-3.6%	485	\$ 139,913
BOLES ISD	55.7%	100	47.3%	57.9%	108	51.7%	4.4%	38	\$ 10,913
BOLING ISD	53.6%	236	64.3%	60.8%	289	74.6%	10.3%	-	-
BONHAM ISD	71.2%	881	77.0%	72.0%	913	81.7%	4.7%	-	-
BOOKER ISD	65.6%	41	20.6%	71.3%	34	15.5%	-5.1%	120	\$ 33,862
BORDEN COUNTY ISD	36.6%	27	43.2%	36.7%	20	41.4%	-1.8%	14	\$ 3,807
BORGER ISD	53.2%	387	43.3%	60.8%	413	45.9%	2.6%	217	\$ 64,852
BOSQUEVILLE ISD	36.3%	98	55.0%	39.4%	100	56.3%	1.3%	24	\$ 6,756
BOVINA ISD	86.6%	363	96.7%	87.2%	346	91.0%	-5.7%	-	-
BOWIE ISD	53.9%	479	86.5%	55.9%	592	120.7%	34.2%	-	-
BOYD ISD	49.4%	230	56.6%	44.8%	263	58.9%	2.3%	49	\$ 13,652
BOYS & GIRLS CLUBS OF SOUTH CENTRAL TEXAS	87.9%	98	53.5%	79.7%	86	47.3%	-6.2%	41	\$ 12,118
BOYSVILLE INC	*	*	*	100.0%	26	188.5%	-	-	-
BRACKETT ISD	58.2%	117	43.2%	57.8%	100	42.0%	-1.2%	67	\$ 19,712
BRADY ISD	68.5%	462	84.6%	68.9%	414	82.5%	-2.1%	-	-
BRAINATION, INC	*	*	*	100.0%	222	100.4%	-	-	-
BRAZORIA COUNTY JUVENILE PROBATION DEPT.	*	*	*	91.4%	46	99.0%	-	-	-
BRAZOS COUNTY JUVENILE SERVICES	*	*	*	96.1%	47	102.3%	-	-	-
BRAZOS ISD	63.5%	218	54.1%	67.0%	258	59.0%	4.9%	48	\$ 13,563
BRAZOSPORT ISD	59.3%	2,413	47.3%	66.0%	2,681	44.7%	-2.6%	1,522	\$ 429,450
BRECKENRIDGE ISD	68.6%	449	70.5%	62.9%	582	102.3%	31.8%	-	-
BREMOND ISD	51.2%	88	44.3%	60.4%	124	56.1%	11.8%	31	\$ 8,685
BRENHAM ISD	60.9%	1,233	56.1%	60.0%	1,165	54.1%	-2.0%	341	\$ 98,013
BRIDGE CITY ISD	38.9%	437	58.2%	40.9%	419	52.6%	-5.6%	138	\$ 39,200
BRIDGEPORT ISD	62.6%	412	39.4%	63.3%	473	44.5%	5.1%	270	\$ 76,254
BROADDUS ISD	78.4%	186	71.8%	80.5%	181	74.7%	2.9%	-	-
BROCK ISD	11.3%	31	45.2%	21.1%	25	58.8%	13.6%	5	\$ 1,350
BRONTE ISD	47.7%	72	79.7%	49.6%	71	88.9%	9.2%	-	-
BROOKELAND ISD	63.8%	97	48.1%	68.5%	81	45.7%	-2.4%	43	\$ 12,709
BROOKESMITH ISD	71.1%	70	76.0%	100.0%	80	64.1%	-11.9%	7	\$ 2,166
BROOKHAVEN YOUTH RANCH INC.	*	*	*	100.0%	36	102.1%	-	-	-
BROOKS ACADEMY OF SCIENCE AND ENGINEERING	80.2%	152	21.6%	60.5%	480	35.9%	14.3%	456	\$ 130,226
BROOKS COUNTY ISD	97.5%	1,296	100.0%	100.0%	1,240	98.9%	-1.1%	-	-
BROWNFIELD ISD	82.3%	1,304	111.0%	100.0%	1,313	95.6%	-15.4%	-	-
BROWNSBORO ISD	58.1%	650	58.3%	60.6%	675	60.5%	2.2%	107	\$ 29,909
BROWNSVILLE ISD	90.5%	31,496	91.3%	98.4%	27,739	82.5%	-8.8%	-	-
BROWN WOOD ISD	66.7%	1,071	64.2%	65.8%	1,139	68.3%	4.1%	28	\$ 8,188
BRUCEVILLE-EDDY ISD	61.5%	181	53.8%	59.2%	142	50.8%	-3.0%	54	\$ 15,287
BRYAN ISD	74.2%	5,624	56.9%	76.2%	5,488	57.3%	0.4%	1,220	\$ 349,886
BRYSON ISD	58.7%	98	96.9%	57.5%	93	88.7%	-8.2%	-	-
BUCKHOLTS ISD	87.1%	66	71.1%	99.3%	79	77.1%	6.0%	-	-
BUENA VISTA ISD	61.3%	72	69.8%	49.6%	82	88.7%	18.9%	-	-
BUFFALO ISD	63.7%	319	67.6%	98.5%	584	86.3%	18.7%	-	-
BULLARD ISD	34.9%	280	47.4%	36.6%	334	59.1%	11.7%	62	\$ 17,934
BUNA ISD	44.6%	250	59.4%	51.1%	289	57.7%	-1.7%	62	\$ 17,765
BURKBURNETT ISD	56.6%	721	53.9%	49.1%	690	60.1%	6.2%	114	\$ 31,359
BURKEVILLE ISD	72.8%	111	62.9%	100.0%	593	114.2%	51.3%	-	-
BURLESON ISD	36.2%	1,250	37.3%	38.9%	1,442	40.2%	2.9%	1,070	\$ 300,399
BURNET CONS ISD	56.5%	895	62.8%	59.5%	859	58.0%	-4.8%	177	\$ 50,349
BURTON ISD	56.9%	107	55.4%	58.2%	113	58.4%	3.0%	23	\$ 6,425

District	2016-2017			2018-2019			Change in Ratio of SBP to NSLP Participation	Additional Students if 70% Met	Additional Dollars if 70% Met
	% FR Eligible	FR Breakfast ADP	FR Students in SBP per 100 in NSLP	% FR Eligible	FR Breakfast ADP	FR Students in SBP per 100 NSLP			
BUSHLAND ISD	22.1%	97	50.1%	23.1%	98	48.3%	-1.8%	44	\$ 12,564
BYNUM ISD	70.3%	52	61.3%	82.2%	64	54.0%	-7.3%	19	\$ 5,421
CADDO MILLS ISD	32.5%	190	45.5%	35.5%	227	48.2%	2.7%	103	\$ 28,906
CALALLEN ISD	47.9%	570	42.4%	50.4%	618	40.6%	-1.8%	447	\$ 128,717
CALDWELL ISD	59.1%	306	40.8%	57.5%	329	44.7%	3.9%	186	\$ 53,814
CALHOUN CO ISD	65.1%	1,157	64.4%	100.0%	1,541	56.7%	-7.7%	362	\$ 104,839
CALLISBURG ISD	48.9%	318	79.2%	53.3%	229	63.2%	-16.0%	25	\$ 7,151
CALVERT ISD	100.0%	94	78.5%	100.0%	139	106.4%	27.9%	-	-
CAMERON ISD	76.8%	909	89.1%	100.0%	1,103	89.5%	0.4%	-	-
CAMPBELL ISD	63.8%	141	83.5%	69.6%	140	88.3%	4.8%	-	-
CANADIAN ISD	40.3%	114	42.2%	44.4%	122	48.5%	6.3%	54	\$ 15,648
CANTON ISD	40.7%	268	53.1%	45.7%	279	52.8%	-0.3%	91	\$ 26,396
CANUTILLO ISD	95.2%	4,604	98.0%	100.0%	4,882	93.8%	-4.2%	-	-
CANYON ISD	32.2%	1,089	52.3%	30.5%	1,022	50.5%	-1.8%	395	\$ 111,576
CARLISLE ISD	75.3%	236	59.6%	76.5%	188	52.1%	-7.5%	65	\$ 18,275
CARRIZO SPRINGS CONS ISD	86.2%	855	53.0%	90.1%	901	54.7%	1.7%	253	\$ 76,019
CARROLLTON-FARMERS BRANCH	63.2%	3,649	30.9%	65.8%	4,239	36.0%	5.1%	3,995	\$ 1,149,013
CARTHAGE ISD	55.5%	836	76.2%	56.3%	822	83.4%	7.2%	-	-
CASA GRACIA	100.0%	39	92.0%	100.0%	25	102.3%	10.3%	-	-
CASTLEBERRY ISD	71.9%	1,627	66.5%	81.0%	1,556	63.0%	-3.5%	172	\$ 48,617
CAYUGA ISD	33.6%	84	58.2%	42.8%	98	59.6%	1.4%	17	\$ 4,805
CEDAR HILL ISD	68.9%	2,271	55.3%	68.6%	2,310	58.7%	3.4%	446	\$ 126,072
CEDARS INTERNATIONAL ACADEMY	82.9%	119	36.5%	79.0%	178	49.4%	12.9%	74	\$ 21,880
CELESTE ISD	54.2%	112	51.4%	59.6%	127	55.9%	4.5%	32	\$ 9,163
CELINA ISD	26.1%	201	45.9%	23.0%	199	44.7%	-1.2%	113	\$ 32,034
CENTER ISD	80.3%	865	53.1%	79.0%	924	61.9%	8.8%	121	\$ 33,934
CENTER POINT ISD	78.5%	168	48.0%	73.2%	128	44.2%	-3.8%	75	\$ 20,758
CENTERVILLE ISD	*	*	*	65.5%	44	64.1%		4	\$ 1,174
CENTERVILLE ISD-CENTERVILLE	46.7%	98	54.3%	49.2%	150	72.4%	18.1%	-	-
CENTERVILLE ISD-GROVETON	60.0%	31	62.1%	*	*	*		*	*
CENTRAL HEIGHTS ISD	40.9%	160	49.5%	43.2%	169	51.3%	1.8%	62	\$ 17,707
CENTRAL ISD	57.0%	243	37.9%	59.8%	266	44.3%	6.4%	155	\$ 44,539
CHANNELVIEW ISD	81.2%	2,960	46.6%	89.0%	2,869	42.9%	-3.7%	1,815	\$ 516,627
CHANNING ISD	60.8%	63	72.2%	70.2%	74	78.1%	5.9%	-	-
CHAPEL HILL ISD-MT. PLEASANT	53.5%	151	47.6%	53.9%	122	37.7%	-9.9%	105	\$ 28,487
CHAPEL HILL ISD-TYLER	76.2%	1,012	47.9%	78.0%	1,084	52.0%	4.1%	374	\$ 108,273
CHARLOTTE ISD	68.1%	338	110.2%	73.8%	293	109.6%	-0.6%	-	-
CHEROKEE ISD	64.0%	18	43.4%	65.1%	24	57.7%	14.3%	5	\$ 1,468
CHESTER ISD	54.6%	65	71.1%	52.3%	57	86.4%	15.3%	-	-
CHICO ISD	64.9%	121	41.6%	51.0%	118	41.0%	-0.6%	83	\$ 23,212
CHILD CRISIS CENTER OF EL PASO	*	*	*	100.0%	3	316.8%		-	-
CHILDREN'S AID SOCIETY OF WEST TEXAS	*	*	*	100.0%	11	392.9%		-	-
CHILDREN'S HOPE RESIDENTIAL SERVICES INC	*	*	*	100.0%	81	100.2%		-	-
CHILDRESS ISD	57.9%	218	52.2%	56.0%	231	58.0%	5.8%	48	\$ 13,088
CHILLICOTHE ISD	87.9%	154	115.6%	82.6%	151	111.9%	-3.7%	-	-
CHILTON ISD	87.1%	192	56.5%	89.9%	212	56.4%	-0.1%	51	\$ 15,106
CHINA SPRING ISD	27.5%	216	45.5%	28.5%	267	50.1%	4.6%	106	\$ 31,237
CHIRENO ISD	65.8%	98	48.3%	66.7%	111	54.9%	6.6%	30	\$ 8,458
CHISUM ISD	53.5%	146	43.9%	55.3%	164	47.8%	3.9%	76	\$ 21,028
CHRISTOVAL ISD	23.9%	52	70.8%	29.2%	66	69.6%	-1.2%	0	\$ 93
CISCO ISD	56.9%	164	49.6%	59.6%	196	56.9%	7.3%	45	\$ 12,998
CITY VIEW ISD	70.2%	234	46.7%	81.0%	614	82.5%	35.8%	-	-
CITYSCAPE SCHOOLS	*	*	*	88.9%	573	89.7%		-	-
CLARENDON ISD	54.6%	110	57.3%	54.7%	99	56.8%	-0.5%	23	\$ 6,697
CLARITY CHILD GUIDANCE CENTER	*	*	*	62.2%	32	97.3%		-	-
CLARKSVILLE ISD	100.0%	370	87.3%	100.0%	358	86.2%	-1.1%	-	-
CLAUDE ISD	51.5%	68	58.5%	44.8%	58	58.4%	-0.1%	11	\$ 3,179
CLEAR CREEK ISD	34.2%	2,287	48.6%	38.5%	2,288	47.2%	-1.4%	1,103	\$ 319,628
CLEBURNE ISD	68.0%	1,608	45.5%	66.7%	1,597	45.5%	0.0%	857	\$ 241,524
CLEVELAND ISD	82.1%	1,774	56.4%	100.0%	2,930	57.6%	1.2%	632	\$ 185,411
CLIFTON ISD	54.4%	249	58.6%	58.8%	237	55.8%	-2.8%	60	\$ 16,961

District	2016-2017			2018-2019			Change in Ratio of SBP to NSLP Participation	Additional Students if 70% Met	Additional Dollars if 70% Met
	% FR Eligible	FR Breakfast ADP	FR Students in SBP per 100 in NSLP	% FR Eligible	FR Breakfast ADP	FR Students in SBP per 100 NSLP			
CLINT ISD	97.1%	9,215	101.9%	98.2%	8,875	105.3%	3.4%	-	-
CLYDE CONS ISD	51.8%	279	46.9%	52.7%	268	48.6%	1.7%	118	\$ 34,059
COAHOMA ISD	48.4%	105	37.6%	41.5%	134	44.2%	6.6%	78	\$ 21,548
COLDSPRING-OAKHURST CONS	65.3%	481	60.5%	94.6%	745	64.5%	4.0%	63	\$ 18,354
COLEMAN ISD	55.9%	311	91.4%	57.4%	328	108.5%	17.1%	-	-
COLLEGE STATION ISD	33.7%	1,550	45.8%	36.3%	1,774	47.4%	1.6%	848	\$ 233,185
COLLINSVILLE ISD	51.0%	89	44.4%	60.5%	118	54.1%	9.7%	35	\$ 9,800
COLMESNEIL ISD	64.6%	171	86.6%	61.3%	136	73.7%	-12.9%	-	-
COLORADO ISD	61.5%	357	84.2%	64.4%	332	91.6%	7.4%	-	-
COLUMBIA-BRAZORIA ISD	54.1%	753	71.4%	45.9%	695	72.5%	1.1%	-	-
COLUMBUS ISD	66.2%	333	43.7%	71.7%	295	38.5%	-5.2%	241	\$ 60,251
COMAL ISD	30.8%	3,060	64.0%	32.3%	2,885	54.4%	-9.6%	829	\$ 239,297
COMANCHE ISD	67.8%	390	52.7%	67.6%	391	51.1%	-1.6%	144	\$ 40,169
COMFORT ISD	57.2%	228	48.5%	56.1%	203	44.2%	-4.3%	118	\$ 33,873
COMMERCE ISD	63.3%	560	82.4%	65.6%	500	73.5%	-8.9%	-	-
COMMUNITY ISD	46.7%	266	42.0%	52.8%	348	42.2%	0.2%	229	\$ 65,163
COMO-PICKTON ISD	79.7%	332	80.2%	71.5%	314	82.4%	2.2%	-	-
COMPASS ROSE EDUCATION INC.	*	*	*	80.0%	61	51.4%		22	\$ 6,517
COMSTOCK ISD	30.8%	35	78.2%	32.8%	43	84.7%	6.5%	-	-
CONNALLY ISD	76.5%	1,130	74.2%	100.0%	1,395	75.2%	1.0%	-	-
CONROE ISD	38.2%	6,247	41.9%	40.6%	7,949	47.2%	5.3%	3,831	\$ 993,169
COOLIDGE ISD	80.5%	96	45.5%	92.5%	101	47.9%	2.4%	47	\$ 12,272
COOPER ISD	75.1%	266	59.9%	78.7%	223	58.5%	-1.4%	44	\$ 12,617
COPPELL ISD	9.7%	151	37.1%	11.0%	138	29.7%	-7.4%	187	\$ 53,118
COPPERAS COVE ISD	54.4%	1,510	45.6%	58.7%	1,768	51.7%	6.1%	625	\$ 173,908
CORPUS CHRISTI ISD	76.8%	12,068	60.2%	100.0%	14,876	61.7%	1.5%	1,989	\$ 602,849
CORRIGAN-CAMDEN ISD	76.1%	360	72.9%	100.0%	615	97.9%	25.0%	-	-
CORSICANA ISD	77.4%	2,383	69.8%	78.1%	2,284	64.0%	-5.8%	216	\$ 60,960
COTTON CENTER ISD	87.0%	59	84.4%	91.3%	70	75.2%	-9.2%	-	-
COTULLA ISD	87.0%	415	43.0%	91.9%	418	42.5%	-0.5%	270	\$ 78,575
COUPLAND ISD	33.5%	18	44.0%	37.4%	20	45.4%	1.4%	11	\$ 3,123
COVINGTON ISD	50.3%	53	50.9%	61.4%	102	77.6%	26.7%	-	-
CRANDALL ISD	48.5%	501	42.7%	53.2%	721	43.9%	1.2%	429	\$ 117,879
CRANE ISD	51.0%	146	39.7%	51.2%	146	41.1%	1.4%	103	\$ 29,163
CRANFILLS GAP ISD	73.0%	50	63.4%	77.4%	64	83.6%	20.2%	-	-
CRAWFORD ISD	26.7%	55	66.7%	22.6%	49	62.7%	-4.0%	6	\$ 1,669
CRISTO REY FORT WORTH CATHOLIC HIGH SCHOOL, INC.	*	*	*	23.4%	4	22.3%		9	\$ 2,344
CROCKETT CO CONS ISD	58.6%	263	80.4%	55.5%	180	65.2%	-15.2%	13	\$ 3,836
CROCKETT ISD	100.0%	1,031	96.4%	100.0%	1,080	102.9%	6.5%	-	-
CROSBY ISD	52.4%	1,140	51.5%	55.9%	1,353	51.0%	-0.5%	503	\$ 129,598
CROSBYTON ISD	87.4%	237	81.9%	100.0%	299	97.5%	15.6%	-	-
CROSS PLAINS ISD	61.7%	79	47.0%	70.0%	92	57.0%	10.0%	21	\$ 6,018
CROSS ROADS ISD	63.0%	113	60.0%	56.8%	128	62.4%	2.4%	16	\$ 4,550
CROWELL ISD	71.6%	136	110.4%	76.4%	133	101.1%	-9.3%	-	-
CROWLEY ISD	59.1%	4,250	61.7%	68.0%	5,063	62.4%	0.7%	614	\$ 175,720
CRYSTAL CITY ISD	100.0%	661	41.4%	100.0%	1,196	76.2%	34.8%	-	-
CUERO ISD	69.1%	512	59.5%	100.0%	989	82.3%	22.8%	-	-
CULBERSON COUNTY-ALLAMORE ISD	66.6%	233	117.6%	75.9%	198	99.8%	-17.8%	-	-
CUMBY ISD	54.8%	156	98.8%	56.5%	167	99.7%	0.9%	-	-
CUSHING ISD	65.6%	189	71.8%	65.3%	310	95.7%	23.9%	-	-
CYPRESS-FAIRBANKS ISD	48.9%	24,084	53.2%	55.0%	24,790	51.6%	-1.6%	8,828	\$ 2,596,821
DAINGERFIELD-LONE STAR ISD	80.7%	418	58.2%	100.0%	435	52.4%	-5.8%	146	\$ 42,367
DALHART ISD	57.0%	596	86.5%	54.9%	600	94.7%	8.2%	-	-
DALLAS COUNTY JUVENILE DEPARTMENT	*	*	*	100.0%	431	100.8%		-	-
DALLAS ISD	91.7%	93,872	82.3%	98.5%	80,458	72.8%	-9.5%	-	-
DAMON ISD	100.0%	102	68.6%	100.0%	123	82.9%	14.3%	-	-
DANBURY ISD	20.5%	86	61.5%	9.4%	92	51.7%	-9.8%	33	\$ 9,390
DARROUZETT ISD	71.2%	58	79.4%	70.2%	61	93.9%	14.5%	-	-
DAWSON ISD	67.2%	206	76.1%	73.9%	234	76.5%	0.4%	-	-
DAWSON ISD-WELCH	45.9%	41	74.1%	45.4%	34	91.3%	17.2%	-	-

District	2016-2017			2018-2019			Change in Ratio of SBP to NSLP Participation	Additional Students if 70% Met	Additional Dollars if 70% Met
	% FR Eligible	FR Breakfast ADP	FR Students in SBP per 100 in NSLP	% FR Eligible	FR Breakfast ADP	FR Students in SBP per 100 NSLP			
DAYTON ISD	60.5%	1,213	49.7%	68.3%	1,235	44.7%	-5.0%	698	\$ 198,124
DE LEON ISD	60.3%	143	47.9%	67.1%	136	42.7%	-5.2%	87	\$ 25,401
DECATUR ISD	45.7%	467	44.0%	43.7%	437	39.6%	-4.4%	335	\$ 94,657
DEER PARK ISD	46.8%	2,009	55.6%	54.7%	2,229	59.2%	3.6%	406	\$ 114,387
DEL VALLE ISD	79.3%	6,630	85.1%	80.8%	5,868	84.0%	-1.1%	-	-
DELL CITY ISD	100.0%	57	92.9%	100.0%	47	92.1%	-0.8%	-	-
DEMOCRATIC SCHOOLS RESEARCH INSTITUTE	92.7%	136	56.3%	*	*	*		*	*
DENISON ISD	62.2%	1,567	65.1%	65.0%	1,576	62.6%	-2.5%	187	\$ 53,624
DENTON ISD	43.4%	3,832	43.9%	44.5%	4,565	46.6%	2.7%	2,298	\$ 653,182
DENVER CITY ISD	53.3%	899	121.7%	58.0%	516	77.7%	-44.0%	-	-
DEPT OF JUVENILE SRVS SERVING COOKE, FANNIN, GRAYSON COUNTIES	*	*	*	100.0%	63	100.5%		-	-
DESOTO ISD	72.8%	2,548	45.0%	77.3%	3,523	65.0%	20.0%	272	\$ 78,736
DETROIT ISD	67.7%	148	70.9%	69.7%	143	74.2%	3.3%	-	-
DEVERS ISD	48.6%	44	70.3%	56.9%	46	84.4%	14.1%	-	-
DEVINE ISD	61.4%	508	62.2%	63.7%	465	59.1%	-3.1%	86	\$ 25,299
DEW ISD	54.5%	35	54.5%	66.7%	34	53.0%	-1.5%	11	\$ 3,056
DEWEYVILLE ISD	60.7%	178	68.7%	100.0%	252	62.9%	-5.8%	28	\$ 8,440
DHANIS ISD	53.9%	52	35.3%	44.7%	42	39.9%	4.6%	32	\$ 9,027
DIBOLL ISD	79.4%	703	55.3%	76.0%	664	57.5%	2.2%	144	\$ 42,611
DICKINSON ISD	64.4%	2,796	50.9%	69.9%	3,566	63.7%	12.8%	354	\$ 101,458
DILLEY ISD	91.1%	530	72.9%	98.3%	755	93.7%	20.8%	-	-
DIME BOX ISD	85.7%	99	76.2%	100.0%	117	90.1%	13.9%	-	-
DIMMITT ISD	93.8%	932	91.6%	93.8%	868	90.3%	-1.3%	-	-
DODD CITY ISD	44.4%	65	60.2%	44.1%	66	63.7%	3.5%	7	\$ 1,838
DONNA ISD	100.0%	12,284	95.0%	100.0%	12,075	99.4%	4.4%	-	-
DOUGLASS ISD	42.1%	71	52.4%	45.2%	63	48.4%	-4.0%	28	\$ 7,934
DRAW ACADEMY	92.4%	122	23.0%	100.0%	174	29.6%	6.6%	238	\$ 69,759
DRIPPING SPRINGS ISD	11.3%	159	53.9%	16.9%	153	37.3%	-16.6%	135	\$ 40,038
DRISCOLL ISD	69.9%	100	58.7%	100.0%	191	75.1%	16.4%	-	-
DUBLIN ISD	76.4%	442	64.3%	76.3%	444	65.9%	1.6%	28	\$ 7,753
DUMAS ISD	66.8%	1,821	90.4%	64.8%	1,676	90.2%	-0.2%	-	-
DUNCANVILLE ISD	82.6%	3,076	39.8%	79.2%	2,907	38.0%	-1.8%	2,451	\$ 684,060
EAGLE MT-SAGINAW ISD	43.0%	2,307	38.7%	45.5%	2,500	40.5%	1.8%	1,818	\$ 534,071
EAGLE PASS ISD	85.9%	7,529	76.8%	92.9%	7,948	77.9%	1.1%	-	-
EANES ISD	3.0%	*	*	3.9%	*	*		*	*
EARLY ISD	49.1%	189	45.4%	49.8%	162	40.8%	-4.6%	115	\$ 33,702
EAST AUSTIN COLLEGE PREP ACADEMY	85.5%	85	23.3%	95.8%	477	64.2%	40.9%	43	\$ 12,694
EAST BERNARD ISD	35.6%	99	37.6%	36.4%	99	39.3%	1.7%	77	\$ 22,291
EAST CENTRAL ISD	66.9%	2,643	49.2%	68.7%	2,546	49.7%	0.5%	1,042	\$ 297,472
EAST CHAMBERS ISD	57.0%	396	58.7%	78.5%	504	74.5%	15.8%	-	-
EAST FORT WORTH MONTESSORI ACADEMY	75.9%	93	30.5%	79.9%	96	51.6%	21.1%	34	\$ 10,169
EASTLAND ISD	57.1%	181	43.8%	64.3%	185	45.0%	1.2%	103	\$ 28,561
ECONOMIC OPPORTUNITIES ADVANCEMENT CORP of PLANNING REGION XII	100.0%	125	64.7%	100.0%	125	64.7%	0.0%	10	\$ 2,838
ECTOR COUNTY ISD	53.2%	10,545	93.4%	61.8%	9,923	87.9%	-5.5%	-	-
ECTOR COUNTY JUVENILE PROBATION	*	*	*	100.0%	24	100.4%		-	-
ECTOR ISD	47.2%	45	56.1%	60.4%	52	49.0%	-7.1%	22	\$ 6,216
EDCOUCH-ELSA ISD	100.0%	4,421	97.4%	100.0%	3,995	92.3%	-5.1%	-	-
EDEN CONS ISD	74.2%	76	59.9%	69.9%	63	58.3%	-1.6%	13	\$ 3,592
EDGEWOOD ISD-EDGEWOOD	46.0%	182	57.4%	49.8%	208	57.8%	0.4%	44	\$ 12,780
EDGEWOOD ISD-SAN ANTONIO	100.0%	6,965	75.4%	100.0%	5,350	62.3%	-13.1%	662	\$ 189,693
EDINBURG ISD	84.5%	18,145	77.5%	84.5%	17,581	77.6%	0.1%	-	-
EDNA ISD	64.7%	333	44.7%	66.4%	379	50.4%	5.7%	148	\$ 41,004
EHRHART SCHOOL	82.0%	81	36.0%	92.8%	76	26.6%	-9.4%	124	\$ 35,868
EL CAMPO ISD	69.6%	888	49.8%	69.8%	805	45.5%	-4.3%	432	\$ 124,925

District	2016-2017			2018-2019			Change in Ratio of SBP to NSLP Participation	Additional Students if 70% Met	Additional Dollars if 70% Met
	% FR Eligible	FR Breakfast ADP	FR Students in SBP per 100 in NSLP	% FR Eligible	FR Breakfast ADP	FR Students in SBP per 100 NSLP			
EL PASO COUNTY JUVENILE PROBATION CENTER	*	*	*	100.0%	79	100.5%		-	-
EL PASO EDUCATION INITIATIVE, INC. (THE) Burnham Wood	55.1%	97	24.7%	57.2%	88	24.3%	-0.4%	167	\$ 49,667
EL PASO EDUCATION INITIATIVE, INC. (THE) Vista Del Futuro	57.5%	49	34.4%	56.5%	46	30.9%	-3.5%	58	\$ 17,155
EL PASO ISD	76.8%	23,209	73.5%	74.8%	21,262	72.0%	-1.5%	-	-
EL PASO LEADERSHIP ACADEMY	86.1%	48	29.4%	100.0%	54	29.0%	-0.4%	76	\$ 21,705
ELECTRA ISD	66.4%	256	120.0%	70.1%	270	128.9%	8.9%	-	-
ELGIN ISD	73.9%	2,077	81.8%	77.3%	2,255	82.1%	0.3%	-	-
ELKHART ISD	58.3%	237	54.4%	57.8%	294	58.3%	3.9%	59	\$ 17,126
ELYSIAN FIELDS ISD	53.2%	239	65.0%	51.3%	235	67.8%	2.8%	8	\$ 2,114
ENNIS ISD	67.3%	2,274	77.9%	69.3%	2,827	97.6%	19.7%	-	-
ERA ISD	41.4%	55	40.3%	35.6%	65	47.5%	7.2%	31	\$ 8,853
ERATH EXCELS ACADEMY, INC.	78.4%	35	104.5%	91.7%	40	103.8%	-0.7%	-	-
ETOILE ACADEMY INC.	*	*	*	93.9%	30	61.7%		4	\$ 1,146
ETOILE ISD	83.5%	81	88.2%	100.0%	88	87.1%	-1.1%	-	-
EULA ISD	63.5%	105	54.6%	54.0%	107	55.1%	0.5%	29	\$ 7,900
EUSTACE ISD	86.0%	533	49.2%	86.3%	567	52.9%	3.7%	183	\$ 51,795
EVADALE ISD	34.5%	63	64.7%	42.9%	67	61.3%	-3.4%	10	\$ 2,564
EVANT ISD	63.1%	89	75.6%	67.9%	76	65.4%	-10.2%	5	\$ 1,503
EVERMAN ISD	80.9%	1,429	38.1%	83.0%	1,705	42.4%	4.3%	1,109	\$ 313,261
EVOLUTION ACADEMY CHARTER	74.4%	199	176.8%	84.3%	194	78.9%	-97.9%	-	-
EXCELLENCE IN LEADERSHIP ACADEMY	86.8%	87	48.6%	97.2%	97	47.1%	-1.5%	47	\$ 13,945
EXCELSIOR ISD	90.7%	49	76.9%	100.0%	50	80.4%	3.5%	-	-
EZZELL ISD	49.5%	35	85.7%	46.2%	27	82.5%	-3.2%	-	-
FABENS ISD	100.0%	635	34.9%	100.0%	565	34.0%	-0.9%	599	\$ 172,753
FAIRFIELD ISD	50.2%	365	54.1%	52.1%	341	50.8%	-3.3%	129	\$ 35,719
FAITH FAMILY KIDS INC DBA WAXAHACHIE FAITH FAMILY ACADEMY	88.7%	1,416	89.1%	98.2%	1,288	82.5%	-6.6%	-	-
FALLS CITY ISD	21.7%	35	70.1%	25.8%	35	59.5%	-10.6%	6	\$ 1,781
FANNINDEL ISD	92.7%	99	76.2%	100.0%	108	79.2%	3.0%	-	-
FARMERSVILLE ISD	55.7%	367	55.0%	51.4%	360	50.5%	-4.5%	138	\$ 38,113
FARWELL ISD	67.0%	112	41.9%	71.1%	106	40.3%	-1.6%	78	\$ 21,892
FATHER YERMO SCHOOLS	*	*	*	87.4%	84	48.1%		38	\$ 10,373
FAYETTEVILLE ISD	28.9%	21	39.3%	35.5%	22	40.5%	1.2%	16	\$ 4,666
FERRIS ISD	77.0%	932	57.0%	92.6%	1,163	60.3%	3.3%	186	\$ 53,828
FLATONIA ISD	62.7%	105	41.8%	62.3%	153	39.6%	-2.2%	118	\$ 22,116
FLORENCE ISD	64.9%	441	82.3%	63.4%	405	78.8%	-3.5%	-	-
FLORESVILLE ISD	54.6%	797	53.4%	55.7%	918	60.6%	7.2%	143	\$ 40,992
FLOUR BLUFF ISD	44.7%	1,154	60.9%	48.2%	1,120	57.2%	-3.7%	251	\$ 73,795
FLOYDADA ISD	84.7%	563	114.3%	100.0%	613	109.8%	-4.5%	-	-
FOCUS LEARNING ACADEMY, INC.	95.2%	719	101.9%	*	*	*		*	*
FOLLETT ISD	50.6%	31	49.8%	59.9%	34	57.6%	7.8%	7	\$ 2,052
FORESTBURG ISD	45.7%	53	92.2%	49.5%	64	108.8%	16.6%	-	-
FORNEY ISD	25.9%	610	41.2%	28.6%	903	46.4%	5.2%	459	\$ 129,224
FORSAN ISD	33.3%	113	57.5%	32.9%	98	51.5%	-6.0%	35	\$ 9,963
FORT BEND ISD	39.6%	6,039	34.1%	44.3%	7,658	35.8%	1.7%	7,305	\$ 2,075,109
FORT STOCKTON ISD	*	*	*	67.5%	389	31.0%		489	\$ 139,975
FORT WORTH ACADEMY OF FINE ARTS	9.8%	6	16.2%	*	*	*		*	*
FORT WORTH ISD	86.9%	29,937	53.2%	88.9%	30,677	57.2%	4.0%	6,869	\$ 2,021,095
FRANKLIN ISD	37.0%	194	68.0%	42.5%	182	62.3%	-5.7%	22	\$ 6,765
FRANKSTON ISD	52.4%	215	64.2%	54.0%	176	59.9%	-4.3%	30	\$ 8,282
FREDERICKSBURG ISD	50.2%	547	42.5%	52.5%	643	42.5%	0.0%	417	\$ 98,536
FREER ISD	97.8%	689	100.6%	97.8%	696	114.0%	13.4%	-	-
FRENSHIP ISD	40.9%	1,431	50.5%	43.6%	1,572	51.4%	0.9%	568	\$ 160,014
FRIENDSWOOD ISD	9.3%	46	27.3%	12.3%	86	40.5%	13.2%	62	\$ 8,713
FRIONA ISD	79.8%	682	96.7%	69.8%	591	94.9%	-1.8%	-	-
FRISCO ISD	11.6%	1,412	29.4%	13.7%	1,923	31.7%	2.3%	2,318	\$ 661,593
FROST ISD	52.7%	101	54.9%	55.1%	95	58.3%	3.4%	19	\$ 5,387

District	2016-2017			2018-2019			Change in Ratio of SBP to NSLP Participation	Additional Students if 70% Met	Additional Dollars if 70% Met
	% FR Eligible	FR Breakfast ADP	FR Students in SBP per 100 in NSLP	% FR Eligible	FR Breakfast ADP	FR Students in SBP per 100 NSLP			
FRUITVALE ISD	77.3%	209	86.6%	88.1%	231	80.1%	-6.5%	-	-
FT DAVIS ISD	42.7%	12	*	*	*	*		*	*
FT HANCOCK ISD	91.6%	298	93.0%	91.7%	281	90.4%	-2.6%	-	-
FT SAM HOUSTON ISD	31.0%	134	37.3%	34.7%	164	42.5%	5.2%	106	\$ 29,345
FT STOCKTON ISD	66.9%	435	39.5%	*	*	*		*	*
GAINESVILLE ISD	77.3%	1,619	80.1%	73.0%	1,568	79.8%	-0.3%	-	-
GALENA PARK ISD	75.6%	6,817	45.2%	99.2%	14,943	85.1%	39.9%	-	-
GALVESTON COUNTY JUVENILE BOARD	*	*	*	86.1%	31	97.4%		-	-
GALVESTON ISD	75.4%	2,773	69.1%	95.6%	3,215	65.2%	-3.9%	236	\$ 70,808
GANADO ISD	56.5%	160	59.6%	55.8%	150	66.0%	6.4%	9	\$ 2,563
GARLAND ISD	61.9%	14,219	48.6%	71.5%	15,153	50.9%	2.3%	5,705	\$ 1,645,067
GARNER ISD	61.2%	104	109.7%	59.9%	108	120.8%	11.1%	-	-
GARRISON ISD	49.7%	133	60.5%	69.5%	169	66.0%	5.5%	10	\$ 3,038
GARY ISD	46.1%	126	76.7%	53.9%	109	72.5%	-4.2%	-	-
GATESVILLE ISD	54.6%	506	47.1%	55.3%	497	49.1%	2.0%	212	\$ 59,971
GATEWAY CHARTER ACADEMY	97.1%	219	44.9%	85.1%	466	84.5%	39.6%	-	-
GAUSE ISD	62.1%	63	77.8%	73.8%	62	71.9%	-5.9%	-	-
GENERATIONS OF LIFE FOUNDATION	89.3%	220	69.2%	*	*	*		*	*
Genesis Schools	89.2%	161	40.9%	83.6%	234	48.9%	8.0%	101	\$ 28,405
GEORGE GERVIN YOUTH CENTER, INC.	100.0%	619	92.2%	100.0%	564	82.2%	-10.0%	-	-
GEORGE WEST ISD	55.7%	273	66.4%	61.5%	268	62.9%	-3.5%	30	\$ 8,698
GEORGETOWN ISD	46.6%	2,311	65.4%	41.6%	1,458	44.6%	-20.8%	830	\$ 233,825
GHOLSON ISD	80.4%	111	69.9%	74.6%	109	76.2%	6.3%	-	-
GIDDINGS ISD	71.4%	450	47.3%	76.9%	499	48.8%	1.5%	217	\$ 62,239
GILMER ISD	67.9%	1,002	82.4%	81.4%	1,062	72.3%	-10.1%	-	-
GLADEWATER ISD	73.0%	669	67.0%	73.3%	611	60.7%	-6.3%	94	\$ 25,882
GLASSCOCK ISD	36.0%	40	43.9%	38.8%	57	62.5%	18.6%	7	\$ 1,942
GLEN ROSE ISD	46.2%	264	48.6%	45.3%	313	52.6%	4.0%	103	\$ 29,362
GODLEY ISD	56.8%	431	51.0%	53.5%	466	54.1%	3.1%	136	\$ 37,931
GOLD BURG ISD	66.7%	37	64.0%	77.5%	41	55.8%	-8.2%	10	\$ 3,053
GOLDEN RULE SCHOOLS INC.	94.8%	371	34.3%	96.2%	424	42.4%	8.1%	276	\$ 78,395
GOLDTHWAITE ISD	47.0%	113	68.0%	50.1%	92	64.6%	-3.4%	8	\$ 2,060
GOLIAD ISD	54.5%	216	43.9%	53.4%	259	52.2%	8.3%	88	\$ 24,754
GONZALES ISD	73.8%	885	67.4%	77.2%	939	70.9%	3.5%	-	-
GOODRICH ISD	100.0%	157	80.7%	100.0%	159	82.5%	1.8%	-	-
GOOSE CREEK ISD	61.4%	7,433	64.0%	70.0%	7,308	58.1%	-5.9%	1,500	\$ 437,200
GORDON ISD	47.5%	27	43.5%	58.1%	48	65.9%	22.4%	3	\$ 869
GORMAN ISD	69.2%	78	47.3%	71.9%	72	55.4%	8.1%	19	\$ 5,343
GRADY ISD	35.0%	34	47.5%	38.5%	34	43.3%	-4.2%	21	\$ 5,723
GRAFORD ISD	60.4%	70	48.3%	65.5%	64	45.3%	-3.0%	35	\$ 9,637
GRAHAM ISD	59.0%	455	49.3%	58.2%	618	52.0%	2.7%	213	\$ 41,053
GRANBURY ISD	49.1%	1,294	52.3%	53.4%	1,644	54.8%	2.5%	456	\$ 115,305
GRAND PRAIRIE ISD	67.7%	10,946	67.4%	74.8%	11,299	66.2%	-1.2%	650	\$ 178,273
GRAND SALINE ISD	66.8%	326	62.8%	67.4%	313	59.1%	-3.7%	58	\$ 16,468
GRANDFALLS-ROYALTY ISD	84.0%	40	53.1%	100.0%	77	63.9%	10.8%	7	\$ 2,108
GRANDVIEW ISD	33.3%	157	57.8%	38.3%	193	61.5%	3.7%	26	\$ 7,692
GRANGER ISD	68.6%	96	45.0%	67.8%	128	55.7%	10.7%	33	\$ 9,627
GRAPE CREEK ISD	80.9%	474	81.9%	70.8%	505	87.7%	5.8%	-	-
GRAPELAND ISD	85.0%	190	60.1%	93.7%	209	51.6%	-8.5%	74	\$ 21,723
GRAPEVINE-COLLEYVILLE ISD	27.5%	911	45.3%	31.1%	988	47.7%	2.4%	463	\$ 109,541
GREAT HEARTS AMERICA-TEXAS	11.1%	28	21.9%	20.2%	62	21.2%	-0.7%	142	\$ 38,955
GREENVILLE ISD	66.2%	1,428	51.1%	78.1%	1,873	59.6%	8.5%	327	\$ 93,162
GREENWOOD ISD	40.1%	359	55.9%	38.3%	380	52.6%	-3.3%	125	\$ 35,218
GREGORY-PORTLAND ISD	45.5%	590	39.8%	85.7%	1,118	36.6%	-3.2%	1,022	\$ 294,517
GROESBECK ISD	60.7%	897	122.4%	60.9%	742	110.9%	-11.5%	-	-
GROOM ISD	30.1%	13	50.3%	34.4%	17	50.2%	-0.1%	7	\$ 1,870
GROVETON ISD	62.5%	258	76.1%	63.9%	246	65.9%	-10.2%	15	\$ 4,449
GRUVER ISD	52.3%	37	23.9%	49.0%	43	28.8%	4.9%	61	\$ 16,394
GULF COAST COUNCIL OF LARAZA, INC.	95.5%	122	93.8%	100.0%	181	98.5%	4.7%	-	-

District	2016-2017			2018-2019			Change in Ratio of SBP to NSLP Participation	Additional Students if 70% Met	Additional Dollars if 70% Met
	% FR Eligible	FR Breakfast ADP	FR Students in SBP per 100 in NSLP	% FR Eligible	FR Breakfast ADP	FR Students in SBP per 100 NSLP			
GULF COAST TRADES CENTER	*	*	*	100.0%	96	100.0%		-	-
GUNTER ISD	29.0%	113	59.2%	33.3%	129	65.0%	5.8%	10	\$ 2,772
GUSTINE ISD	83.5%	68	59.7%	81.9%	75	74.5%	14.8%	-	-
HALE CENTER ISD	70.6%	185	49.5%	82.6%	456	108.9%	59.4%	-	-
HALLETTVILLE ISD	44.1%	184	48.1%	46.8%	160	39.5%	-8.6%	123	\$ 34,766
HALLSBURG ISD	55.6%	51	64.8%	58.4%	61	76.8%	12.0%	-	-
HALLSVILLE ISD	44.2%	750	49.1%	46.7%	897	51.5%	2.4%	323	\$ 79,645
HAMILTON ISD	57.5%	238	78.3%	56.1%	244	74.0%	-4.3%	-	-
HAMLIN ISD	72.9%	156	79.3%	64.9%	167	96.4%	17.1%	-	-
HAMSHIRE-FANNETT ISD	31.9%	170	47.3%	49.4%	220	48.1%	0.8%	100	\$ 28,445
Hands of Healing Residential Treatment Center, Inc.	*	*	*	100.0%	17	149.2%		-	-
HAPPY ISD	38.8%	71	122.6%	43.1%	86	117.5%	-5.1%	-	-
HARDIN ISD	37.7%	308	58.6%	62.0%	284	54.0%	-4.6%	84	\$ 23,616
HARDIN-JEFFERSON ISD	39.1%	293	51.5%	40.0%	318	47.8%	-3.7%	148	\$ 43,159
HARLANDALE ISD	90.7%	12,377	112.3%	100.0%	12,742	113.4%	1.1%	-	-
HARLETON ISD	48.7%	134	52.8%	51.0%	131	54.2%	1.4%	38	\$ 11,048
HARLINGEN CONS ISD	88.7%	8,393	61.8%	92.3%	8,844	61.9%	0.1%	1,151	\$ 331,763
HARMONY FAMILY SERVICES, INC	*	*	*	100.0%	5	254.7%		-	-
HARMONY ISD	53.5%	147	37.6%	52.5%	160	41.5%	3.9%	110	\$ 31,431
HARMONY PUBLIC SCHOOLS	*	568	19.9%	*	*	*		*	*
HARMONY PUBLIC SCHOOLS	*	430	31.9%	*	*	*		*	*
HARMONY PUBLIC SCHOOLS	*	327	27.8%	*	*	*		*	*
HARMONY PUBLIC SCHOOLS	*	246	30.8%	*	*	*		*	*
HARMONY PUBLIC SCHOOLS	73.7%	463	28.9%	*	*	*		*	*
HARMONY PUBLIC SCHOOLS	71.1%	518	30.8%	*	*	*		*	*
HARMONY PUBLIC SCHOOLS	71.0%	555	32.2%	*	*	*		*	*
HARMONY PUBLIC SCHOOLS	*	*	*	69.2%	3,661	28.0%		5,479	\$ 1,555,645
HARPER ISD	43.9%	96	60.9%	41.4%	100	64.5%	3.6%	9	\$ 2,397
HARRIS COUNTY JUVENILE PROBATION DEPARTMENT	*	*	*	100.0%	372	100.4%		-	-
HARRISON COUNTY JUVENILE SERVICES	*	*	*	100.0%	13	97.8%		-	-
HARROLD ISD	65.8%	53	105.9%	62.6%	41	107.7%	1.8%	-	-
HART ISD	89.7%	132	69.0%	90.2%	58	35.7%	-33.3%	56	\$ 16,530
HARTLEY ISD	62.7%	83	69.6%	72.6%	91	73.1%	3.5%	-	-
HARTS BLUFF ISD	67.8%	80	33.2%	61.4%	110	38.2%	5.0%	92	\$ 25,498
HASKELL CISD	73.4%	166	59.2%	70.9%	266	95.4%	36.2%	-	-
HAWKINS ISD	61.2%	165	49.0%	65.2%	220	60.8%	11.8%	33	\$ 9,903
HAWLEY ISD	62.5%	147	52.3%	57.7%	153	55.9%	3.6%	39	\$ 11,073
HAYS CONS ISD	51.2%	2,960	45.0%	49.4%	3,149	45.7%	0.7%	1,679	\$ 492,156
HAYS COUNTY JUVENILE CENTER	*	*	*	100.0%	45	101.8%		-	-
HEALY MURPHY CENTER INC	*	*	*	100.0%	30	36.1%		28	\$ 8,091
HEARNE ISD	95.2%	402	59.4%	100.0%	435	67.7%	8.3%	15	\$ 4,444
HEDLEY ISD	78.0%	44	61.1%	74.1%	47	68.3%	7.2%	1	\$ 333
HELPING HAND HOME FOR CHILDREN INC	*	*	*	100.0%	30	104.2%		-	-
HEMPHILL ISD	66.0%	211	48.5%	91.7%	303	62.6%	14.1%	36	\$ 9,940
HEMPSTEAD ISD	90.3%	566	55.7%	100.0%	801	71.8%	16.1%	-	-
HENDERSON ISD	66.2%	1,196	64.0%	65.9%	1,312	59.9%	-4.1%	221	\$ 52,603
HENRIETTA ISD	44.6%	321	128.5%	46.2%	275	109.0%	-19.5%	-	-
HENRY FORD LEARNING INSTITUTE	48.2%	7	27.8%	54.3%	8	22.1%	-5.7%	17	\$ 5,168
HEREFORD ISD	79.2%	1,834	70.8%	82.6%	1,661	65.9%	-4.9%	102	\$ 29,541
HERITAGE ACADEMY CHARTER SCHOOLS, INC.	*	*	*	73.2%	108	37.1%		96	\$ 28,120
HERMLEIGH ISD	53.7%	76	70.6%	50.6%	49	60.5%	-10.1%	8	\$ 2,143
HICO ISD	56.7%	178	73.4%	59.5%	186	76.9%	3.5%	-	-
HIDALGO ISD	91.3%	2,563	95.3%	91.3%	2,557	100.0%	4.7%	-	-
HIGGINS ISD	74.3%	65	86.7%	70.7%	34	76.3%	-10.4%	-	-
HIGH ISLAND ISD	73.3%	87	65.3%	100.0%	77	62.3%	-3.0%	10	\$ 2,855
HIGHLAND ISD	42.0%	36	51.3%	36.1%	33	55.4%	4.1%	9	\$ 2,458
HIGHLAND PARK ISD	62.5%	189	44.9%	69.6%	189	49.8%	4.9%	77	\$ 22,317
HILL COUNTRY YOUTH RANCH	100.0%	121	86.3%	86.2%	105	80.9%	-5.4%	-	-

District	2016-2017			2018-2019			Change in Ratio of SBP to NSLP Participation	Additional Students if 70% Met	Additional Dollars if 70% Met
	% FR Eligible	FR Breakfast ADP	FR Students in SBP per 100 in NSLP	% FR Eligible	FR Breakfast ADP	FR Students in SBP per 100 NSLP			
HILLSBORO ISD	70.8%	670	63.8%	75.5%	703	70.9%	7.1%	-	-
HITCHCOCK ISD	82.7%	784	73.9%	100.0%	743	61.0%	-12.9%	110	\$ 31,620
HOLLAND ISD	49.4%	154	63.0%	53.9%	151	62.7%	-0.3%	17	\$ 4,920
HOLLIDAY ISD	25.4%	67	41.7%	25.5%	58	40.3%	-1.4%	43	\$ 12,333
HOLY FAMILY SCHOOL	*	*	*	78.2%	71	98.6%		-	-
HONDO ISD	81.3%	592	60.1%	76.2%	519	65.3%	5.2%	37	\$ 10,734
HONEY GROVE ISD	58.7%	235	77.7%	60.8%	210	69.8%	-7.9%	1	\$ 154
HOOKS ISD	59.5%	206	65.8%	61.2%	216	63.5%	-2.3%	22	\$ 6,345
HOPE ACADEMY, INC.	*	96	81.0%	*	*	*		*	*
HOUSTON GATEWAY ACADEMY, INC.	89.9%	263	21.8%	91.5%	333	24.9%	3.1%	602	\$ 175,388
HOUSTON HEIGHTS LEARNING ACADEMY	80.3%	16	51.1%	*	*	*		-	-
HOUSTON ISD	84.1%	100,026	85.1%	100.0%	103,520	83.5%	-1.6%	-	-
HOUSTON SERENITY PLACE, INC.	*	*	*	100.0%	77	201.8%		-	-
HOWE ISD	43.5%	143	41.3%	47.0%	176	44.7%	3.4%	100	\$ 28,483
HUBBARD ISD-DE KALB	76.2%	33	66.7%	75.9%	42	66.7%	0.0%	2	\$ 590
HUBBARD ISD-HUBBARD	61.7%	164	96.0%	66.1%	152	76.4%	-19.6%	-	-
HUCKABAY ISD	36.2%	26	54.1%	24.6%	15	53.4%	-0.7%	5	\$ 1,350
HUDSON ISD	55.7%	745	59.6%	54.9%	821	62.7%	3.1%	96	\$ 27,764
HUFFMAN ISD	34.4%	480	51.4%	95.1%	1,113	51.4%	0.0%	402	\$ 120,198
HUGHES SPRINGS ISD	60.4%	213	48.4%	60.0%	208	48.9%	0.5%	90	\$ 25,490
HULL-DAISETTA ISD	93.7%	330	94.9%	100.0%	358	91.8%	-3.1%	-	-
HUMBLE ISD	33.4%	4,363	41.6%	40.2%	5,633	45.1%	3.5%	3,119	\$ 896,127
HUNT ISD	50.3%	26	37.5%	53.4%	32	42.3%	4.8%	21	\$ 6,176
HUNTINGTON ISD	57.2%	345	47.1%	56.4%	316	46.3%	-0.8%	161	\$ 44,330
HUNTSVILLE ISD	62.2%	2,464	83.2%	68.6%	2,680	90.1%	6.9%	-	-
HURST-EULESS-BEDFORD ISD	55.9%	4,378	45.0%	61.6%	5,237	49.7%	4.7%	2,146	\$ 621,096
HUTTO ISD	43.2%	1,268	54.5%	40.0%	1,254	56.9%	2.4%	289	\$ 81,894
IDALOU ISD	38.2%	42	18.7%	38.3%	53	26.2%	7.5%	88	\$ 25,556
IDEA ACADEMY	88.4%	18,397	88.4%	94.1%	31,831	92.4%	4.0%	-	-
IMAGINE EDUCATIONAL FOUNDATION	86.4%	62	28.3%	88.7%	97	38.1%	9.8%	81	\$ 24,245
IMAGINE INTERNATIONAL ACADEMY OF NORTH TEXAS	5.4%	*	*	9.6%	30	41.8%		20	\$ 5,705
IMMANUEL LUTHERAN SCHOOL	*	*	*	8.4%	*	*		*	*
INDUSTRIAL ISD	36.7%	126	45.5%	40.1%	120	46.9%	1.4%	59	\$ 16,924
INGLESIDE ISD	61.6%	479	45.3%	100.0%	1,172	67.7%	22.4%	40	\$ 11,799
INGRAM ISD	75.6%	288	51.3%	90.7%	424	57.9%	6.6%	89	\$ 25,349
INTERNATIONAL LEADERSHIP OF TEXAS	50.4%	631	19.5%	66.9%	3,014	33.2%	13.7%	3,348	\$ 922,835
IOLA ISD	37.5%	87	62.0%	38.1%	100	67.5%	5.5%	4	\$ 1,071
IOWA PARK CONS ISD	42.1%	343	57.7%	43.3%	363	61.4%	3.7%	51	\$ 14,474
IRA ISD	26.5%	26	44.5%	22.6%	21	47.7%	3.2%	10	\$ 2,674
IRAAN-SHEFFIELD ISD	50.0%	108	67.7%	52.8%	107	68.6%	0.9%	2	\$ 604
IREDELL ISD	61.8%	32	51.5%	63.4%	37	55.0%	3.5%	10	\$ 2,940
IRION CO ISD	38.6%	44	79.3%	37.4%	40	75.4%	-3.9%	-	-
IRVING ISD	82.0%	14,619	66.2%	74.7%	14,523	74.0%	7.8%	-	-
ITALY ISD	62.3%	103	41.2%	62.5%	123	43.7%	2.5%	74	\$ 20,390
ITASCA ISD	69.9%	143	40.8%	71.7%	150	42.3%	1.5%	98	\$ 27,935
JACKSBORO ISD	63.2%	376	82.3%	64.8%	402	85.9%	3.6%	-	-
JACKSONVILLE ISD	78.1%	1,511	49.0%	82.7%	1,369	47.0%	-2.0%	669	\$ 199,123
JARRELL ISD	58.4%	344	52.2%	58.4%	438	51.4%	-0.8%	158	\$ 43,689
JASPER ISD	75.9%	1,080	70.7%	100.0%	1,211	70.2%	-0.5%	-	-
JAYTON-GIRARD ISD	30.7%	19	70.5%	30.5%	27	76.1%	5.6%	-	-
JEAN MASSIEU FOUNDATION	100.0%	122	77.4%	100.0%	125	79.6%	2.2%	-	-
JEFFERSON ISD	69.8%	516	70.0%	100.0%	560	60.6%	-9.4%	86	\$ 24,897
JESUIT CRISTO REY HIGH SCHOOL	*	*	*	56.2%	12	13.1%		51	\$ 14,542
JIM HOGG COUNTY ISD	77.8%	818	100.1%	100.0%	1,031	99.7%	-0.4%	-	-
JIM NED CONS ISD	27.8%	124	59.6%	27.9%	104	52.8%	-6.8%	34	\$ 9,964
JOAQUIN ISD	64.8%	177	52.0%	65.0%	162	50.0%	-2.0%	65	\$ 18,462
JOHNSON CITY ISD	43.0%	89	46.7%	41.8%	90	50.3%	3.6%	35	\$ 9,975
JONESBORO ISD	57.4%	86	77.5%	57.0%	93	81.8%	4.3%	-	-

District	2016-2017			2018-2019			Change in Ratio of SBP to NSLP Participation	Additional Students if 70% Met	Additional Dollars if 70% Met
	% FR Eligible	FR Breakfast ADP	FR Students in SBP per 100 in NSLP	% FR Eligible	FR Breakfast ADP	FR Students in SBP per 100 NSLP			
JOSHUA ISD	48.8%	947	45.5%	51.1%	1,019	45.4%	-0.1%	551	\$ 158,719
JOURDANTON ISD	58.6%	634	99.0%	53.2%	516	73.4%	-25.6%	-	-
JUBILEE ACADEMIC CENTER	58.0%	1,243	52.7%	*	*	*		*	*
JUBILEE ACADEMIES	*	*	*	83.8%	1,845	49.9%		744	\$ 213,614
JUDSON ISD	61.6%	6,015	51.5%	68.1%	7,219	58.8%	7.3%	1,376	\$ 393,159
JUNCTION ISD	69.2%	132	54.1%	91.2%	257	78.4%	24.3%	-	-
KARNACK ISD	100.0%	121	93.9%	100.0%	102	89.4%	-4.5%	-	-
KARNES CITY ISD	71.3%	273	50.1%	72.3%	259	42.8%	-7.3%	164	\$ 46,611
KATHERINE ANNE PORTER SCHOOL	42.6%	17	57.1%	40.2%	20	72.3%	15.2%	-	-
KATY ISD	29.6%	5,643	34.0%	33.0%	6,780	35.4%	1.4%	6,635	\$ 1,905,361
KAUFMAN ISD	66.7%	984	51.1%	74.3%	1,236	56.9%	5.8%	284	\$ 80,179
KEENE ADVENTIST ELEMENTARY SCHOOL	*	*	*	23.5%	*	*		*	*
KEENE ISD	78.5%	371	57.3%	77.8%	377	63.6%	6.3%	38	\$ 10,721
KELLER ISD	26.3%	2,279	35.3%	27.7%	2,691	36.8%	1.5%	2,432	\$ 683,362
KELTON ISD	52.7%	32	68.2%	60.0%	30	82.4%	14.2%	-	-
KEMP ISD	71.5%	437	52.6%	72.4%	470	50.6%	-2.0%	180	\$ 51,082
KENEDY ISD	92.1%	292	52.8%	100.0%	379	63.7%	10.9%	38	\$ 10,749
KENNARD ISD	70.6%	73	57.7%	83.3%	100	60.5%	2.8%	16	\$ 4,355
KENNEDALE ISD	35.5%	452	48.7%	43.6%	504	51.9%	3.2%	176	\$ 48,597
KERENS ISD	68.5%	213	67.1%	81.5%	266	70.4%	3.3%	-	-
KERMIT ISD	70.7%	643	95.8%	70.9%	851	136.6%	40.8%	-	-
KERRVILLE ISD	53.9%	985	49.9%	57.0%	992	52.0%	2.1%	344	\$ 101,022
KILGORE ISD	65.3%	1,079	52.9%	67.0%	1,169	58.3%	5.4%	234	\$ 66,440
KILLEEN ISD	60.4%	9,571	48.1%	67.9%	10,406	48.8%	0.7%	4,535	\$ 1,337,206
KINGSVILLE ISD	82.8%	2,349	102.7%	100.0%	2,655	103.2%	0.5%	-	-
KIPP AUSTIN PUBLIC SCHOOLS	86.7%	2,770	77.5%	*	*	*		*	*
KIPP DALLAS-FORT WORTH, INC.	92.6%	1,124	84.4%	*	*	*		*	*
KIPP TEXAS PUBLIC SCHOOLS	*	*	*	90.0%	9,911	61.6%		1,356	\$ 385,362
KIPP, INC. CHARTER	91.1%	3,945	51.2%	*	*	*		*	*
KIPP: SAN ANTONIO	85.8%	1,002	54.1%	*	*	*		*	*
KIRBYVILLE ISD	63.9%	525	76.8%	100.0%	717	66.6%	-10.2%	37	\$ 10,323
KLEIN ISD	42.5%	6,395	41.4%	48.0%	7,431	42.7%	1.3%	4,748	\$ 1,374,075
KLONDIKE ISD	40.9%	57	78.3%	39.9%	54	74.9%	-3.4%	-	-
KNIPPA ISD	31.4%	51	52.7%	38.7%	58	51.2%	-1.5%	21	\$ 5,415
KNOX CITY-O'BRIEN ISD	70.6%	179	119.5%	76.8%	165	123.2%	3.7%	-	-
KOPPERL ISD	69.7%	87	70.8%	76.4%	74	62.5%	-8.3%	9	\$ 2,448
KOUNTZE ISD	50.3%	200	51.4%	63.9%	232	52.7%	1.3%	76	\$ 22,157
KRESS ISD	73.7%	82	59.9%	71.0%	83	67.9%	8.0%	3	\$ 732
KRUM ISD	38.4%	298	52.5%	38.6%	296	52.9%	0.4%	96	\$ 26,477
LA ACADEMIA DE ESTRELLAS	91.5%	313	54.4%	89.5%	360	58.3%	3.9%	72	\$ 21,214
LA FE PREPARATORY SCHOOL	96.1%	138	64.8%	73.6%	107	71.0%	6.2%	-	-
LA FERIA ISD	87.1%	2,070	79.4%	87.1%	1,804	73.9%	-5.5%	-	-
LA GLORIA ISD	55.9%	34	57.2%	59.2%	32	51.4%	-5.8%	12	\$ 3,152
LA GRANGE ISD	54.1%	372	45.2%	71.2%	383	40.2%	-5.0%	285	\$ 84,568
LA JOYA ISD	87.9%	17,225	80.5%	87.9%	16,083	80.6%	0.1%	-	-
LA PORTE ISD	49.1%	1,629	56.3%	53.8%	1,718	58.1%	1.8%	350	\$ 97,515
LA POYNOR ISD	53.9%	81	41.6%	62.8%	87	41.8%	0.2%	59	\$ 16,171
LA PRYOR ISD	84.6%	243	71.4%	100.0%	292	68.7%	-2.7%	6	\$ 1,682
LA VEGA ISD	90.8%	1,333	58.9%	94.9%	1,472	61.0%	2.1%	218	\$ 62,855
LA VERNIA ISD	23.3%	247	39.4%	30.0%	261	39.6%	0.2%	201	\$ 56,969
LA VILLA ISD	100.0%	465	89.4%	100.0%	450	93.2%	3.8%	-	-
LACKLAND ISD	34.8%	68	28.2%	31.6%	95	44.3%	16.1%	55	\$ 14,472
LAGO VISTA ISD	27.1%	120	49.5%	26.7%	147	58.7%	9.2%	28	\$ 7,878
LAKE DALLAS ISD	43.6%	589	50.2%	44.7%	701	55.0%	4.8%	192	\$ 53,571
LAKE TRAVIS ISD	15.0%	145	29.7%	16.4%	174	30.5%	0.8%	226	\$ 63,291
LAKE WORTH ISD	75.2%	1,078	47.7%	92.0%	1,254	48.6%	0.9%	551	\$ 162,284
LAMAR CONSOLIDATED ISD	46.6%	4,367	42.1%	50.1%	5,289	43.8%	1.7%	3,157	\$ 910,448
LAMESA ISD	81.3%	944	84.7%	99.8%	1,399	103.8%	19.1%	-	-
LAMPASAS ISD	30.1%	573	45.1%	52.7%	569	45.7%	0.6%	303	\$ 84,179
LANCASTER ISD	83.3%	3,471	67.2%	88.2%	3,400	71.8%	4.6%	-	-
LANEVILLE ISD	94.7%	140	84.7%	100.0%	119	79.8%	-4.9%	-	-
LAREDO ISD	100.0%	14,877	72.7%	100.0%	12,391	62.9%	-9.8%	1,403	\$ 402,499

District	2016-2017			2018-2019			Change in Ratio of SBP to NSLP Participation	Additional Students if 70% Met	Additional Dollars if 70% Met
	% FR Eligible	FR Breakfast ADP	FR Students in SBP per 100 in NSLP	% FR Eligible	FR Breakfast ADP	FR Students in SBP per 100 NSLP			
LASARA ISD	100.0%	383	96.2%	100.0%	290	91.9%	-4.3%	-	-
LATEXO ISD	49.2%	68	48.4%	45.6%	61	50.0%	1.6%	25	\$ 7,099
LAZBUDDIE ISD	66.7%	55	53.2%	77.8%	56	59.6%	6.4%	10	\$ 2,691
LEADERS OF TEXAS FOUNDATION INC.	*	*	*	100.0%	14	144.4%		-	-
LEADERSHIP EDUCATION FOUNDATION	*	*	*	100.0%	325	60.4%		52	\$ 15,215
LEAKEY ISD	53.3%	67	55.2%	64.3%	52	48.8%	-6.4%	23	\$ 6,609
LEANDER ISD	20.6%	2,139	42.1%	21.1%	2,443	44.8%	2.7%	1,377	\$ 396,092
LEARNING SCHOOLS OF TEXAS	64.9%	11	14.1%	*	*	*		*	*
LEARY ISD	78.0%	45	64.8%	84.9%	44	60.6%	-4.2%	7	\$ 1,986
LEFORS ISD	71.6%	45	57.6%	69.5%	51	72.0%	14.4%	-	-
LEGACY PREPARATORY CHARTER ACADEMY	70.0%	93	15.3%	50.1%	123	20.6%	5.3%	296	\$ 83,802
LEGGETT ISD	76.2%	110	106.3%	100.0%	127	84.2%	-22.1%	-	-
LENA POPE HOME, INC.	57.9%	84	38.9%	65.1%	159	52.2%	13.3%	54	\$ 15,105
LEON ISD	49.9%	140	46.0%	55.0%	170	56.1%	10.1%	42	\$ 12,193
LEONARD ISD	56.3%	325	79.0%	58.3%	311	79.9%	0.9%	-	-
LEVELLAND ISD	72.0%	901	61.2%	74.6%	874	63.7%	2.5%	86	\$ 24,189
LEVERETTS CHAPEL ISD	80.5%	123	81.5%	96.1%	115	82.4%	0.9%	-	-
LEWISVILLE ISD	33.4%	6,882	52.6%	35.6%	7,428	53.1%	0.5%	2,359	\$ 677,968
LEXINGTON ISD	44.2%	164	52.5%	40.1%	154	48.2%	-4.3%	70	\$ 18,714
LIBERTY HILL ISD	27.1%	365	55.0%	22.2%	389	55.3%	0.3%	103	\$ 28,995
LIBERTY ISD	66.8%	485	50.7%	64.2%	511	51.5%	0.8%	184	\$ 51,493
LIBERTY-EYLAU ISD	87.3%	1,137	70.0%	85.2%	936	61.7%	-8.3%	126	\$ 35,940
LIFE SCHOOL	55.9%	635	28.9%	63.1%	683	29.3%	0.4%	951	\$ 265,848
LINDALE ISD	46.5%	623	46.5%	47.6%	595	45.2%	-1.3%	327	\$ 95,533
LINDSAY ISD	13.3%	11	23.0%	12.5%	11	21.7%	-1.3%	24	\$ 6,191
LINGLEVILLE ISD	57.7%	25	25.2%	54.1%	37	33.5%	8.3%	40	\$ 12,293
LIPAN ISD	58.3%	69	47.0%	52.5%	72	48.8%	1.8%	31	\$ 8,738
LIT CYPRESS-MRCEVILLE CONS ISD	41.4%	500	60.3%	91.5%	741	46.0%	-14.3%	387	\$ 115,707
LITTLE ELM ISD	47.3%	1,111	45.1%	46.8%	1,260	46.8%	1.7%	624	\$ 171,654
LITTLE FLOWER SCHOOL	*	*	*	58.0%	36	48.7%		16	\$ 4,749
LITTLEFIELD ISD	87.3%	1,054	113.2%	100.0%	1,183	126.1%	12.9%	-	-
LIVINGSTON ISD	69.2%	1,875	96.3%	96.7%	2,379	93.5%	-2.8%	-	-
LLANO ISD	71.6%	615	63.4%	73.6%	676	66.9%	3.5%	31	\$ 8,790
LOCKHART ISD	68.0%	2,904	101.8%	71.2%	3,075	102.2%	0.4%	-	-
LOCKNEY ISD	80.0%	134	63.9%	89.6%	403	131.2%	67.3%	-	-
LOHN ISD	100.0%	68	85.0%	100.0%	51	83.8%	-1.2%	-	-
LOMETA ISD	76.0%	119	67.1%	100.0%	138	60.3%	-6.8%	22	\$ 6,410
LONDON ISD	11.4%	23	32.0%	14.4%	26	22.4%	-9.6%	56	\$ 14,243
LONE OAK ISD	43.3%	219	64.2%	46.5%	205	60.3%	-3.9%	33	\$ 9,284
LONGVIEW ISD	70.6%	2,358	51.2%	74.6%	2,424	52.5%	1.3%	805	\$ 241,642
LOOP ISD	54.8%	53	86.5%	71.1%	55	73.3%	-13.2%	-	-
LORAIN ISD	78.0%	88	80.5%	81.4%	82	82.1%	1.6%	-	-
LORENA ISD	27.4%	162	50.3%	28.7%	207	56.6%	6.3%	49	\$ 14,031
LORENZO ISD	100.0%	283	101.6%	100.0%	268	99.7%	-1.9%	-	-
LOS FRESNOS CONS ISD	80.8%	6,196	85.0%	80.8%	5,777	82.9%	-2.1%	-	-
LOUISE ISD	61.3%	118	67.2%	66.5%	137	70.7%	3.5%	-	-
LOVEJOY ISD	3.2%	*	*	3.7%	*	*		*	*
LOVELADY ISD	44.7%	103	60.8%	50.8%	101	56.7%	-4.1%	24	\$ 6,608
LUBBOCK COUNTY JUVENILE JUSTICE CENTER	*	*	*	100.0%	70	101.9%		-	-
LUBBOCK ISD	76.8%	13,875	81.2%	83.1%	12,363	73.7%	-7.5%	-	-
LUBBOCK-COOPER ISD	34.2%	631	45.9%	34.7%	714	45.9%	0.0%	375	\$ 105,157
LUEDERS-AVOCA ISD	78.7%	59	88.0%	81.3%	60	87.0%	-1.0%	-	-
LUFKIN ISD	78.3%	3,026	62.3%	76.9%	2,907	65.0%	2.7%	221	\$ 63,112
LULING ISD	72.7%	392	52.0%	72.0%	353	54.8%	2.8%	98	\$ 28,361
LUMBERTON ISD	31.0%	265	38.0%	34.8%	340	36.7%	-1.3%	308	\$ 88,246
LUMIN EDUCATION	*	*	*	74.8%	106	90.1%		-	-
LUTHERAN SOCIAL SERVICES OF THE SOUTH, INC	*	*	*	100.0%	104	102.4%		-	-
LYDIA PATTERSON INSTITUTE	*	*	*	95.9%	74	37.4%		64	\$ 18,859

District	2016-2017			2018-2019			Change in Ratio of SBP to NSLP Participation	Additional Students if 70% Met	Additional Dollars if 70% Met
	% FR Eligible	FR Breakfast ADP	FR Students in SBP per 100 in NSLP	% FR Eligible	FR Breakfast ADP	FR Students in SBP per 100 NSLP			
LYFORD ISD	100.0%	1,055	86.6%	100.0%	1,027	89.7%	3.1%	-	-
LYTLE ISD	70.8%	522	57.0%	74.0%	725	72.4%	15.4%	-	-
MABANK ISD	60.2%	716	46.8%	63.3%	833	54.2%	7.4%	243	\$ 69,198
MADISONVILLE CONS ISD	70.0%	794	58.7%	74.0%	847	58.6%	-0.1%	164	\$ 48,074
MAGNOLIA ISD	39.8%	2,031	50.0%	48.2%	2,304	50.0%	0.0%	922	\$ 263,539
MALAKOFF ISD	67.8%	389	53.7%	72.2%	455	55.1%	1.4%	123	\$ 34,188
MALONE ISD	89.1%	98	93.0%	100.0%	154	99.6%	6.6%	-	-
MANARA ACADEMY	44.6%	101	55.7%	65.5%	180	53.6%	-2.1%	55	\$ 15,826
MANOR ISD	79.7%	3,375	58.7%	77.4%	3,658	63.2%	4.5%	395	\$ 108,983
MANSFIELD ISD	41.0%	4,445	40.4%	43.5%	4,691	39.6%	-0.8%	3,602	\$ 1,003,922
MARATHON ISD	75.7%	44	*	54.9%	21	*	*	*	*
MARBLE FALLS ISD	65.9%	1,119	54.8%	64.5%	1,145	56.2%	1.4%	282	\$ 81,238
MARFA ISD	71.4%	101	55.6%	74.6%	123	63.4%	7.8%	13	\$ 3,720
MARION ISD	54.1%	261	53.5%	49.0%	237	50.8%	-2.7%	90	\$ 25,518
MARLIN ISD	100.0%	434	60.3%	100.0%	408	56.4%	-3.9%	98	\$ 29,005
MARSHALL ISD	80.1%	1,690	52.5%	80.7%	1,670	56.1%	3.6%	413	\$ 122,570
MART ISD	71.1%	275	94.9%	96.6%	364	94.4%	-0.5%	-	-
MARTINS MILL ISD	43.8%	81	49.7%	49.6%	96	54.6%	4.9%	27	\$ 7,702
MARTINSVILLE ISD	50.9%	163	92.1%	57.2%	173	87.1%	-5.0%	-	-
MASON ISD	51.7%	135	57.2%	55.0%	127	53.8%	-3.4%	38	\$ 10,687
MATAGORDA ISD	67.6%	93	104.7%	92.4%	69	78.5%	-26.2%	-	-
MATHIS ISD	85.7%	1,050	86.7%	100.0%	1,174	86.4%	-0.3%	-	-
MAUD ISD	66.3%	110	52.0%	69.7%	112	50.8%	-1.2%	42	\$ 11,818
MAY ISD	61.4%	81	55.5%	70.6%	69	49.2%	-6.3%	29	\$ 8,298
MAYPEARL ISD	39.4%	179	62.7%	41.5%	158	61.0%	-1.7%	23	\$ 6,533
MCCALLEN ISD	82.1%	13,483	92.7%	82.4%	15,166	110.7%	18.0%	-	-
MCCAMEY ISD	65.5%	108	49.5%	74.5%	113	46.2%	-3.3%	58	\$ 16,223
MCDADE ISD	66.6%	100	58.3%	64.7%	97	56.9%	-1.4%	22	\$ 6,326
MCGREGOR ISD	61.2%	307	47.0%	61.3%	325	52.8%	5.8%	106	\$ 30,608
MCKINNEY ISD	32.1%	3,418	58.4%	33.9%	3,723	61.3%	2.9%	531	\$ 154,828
MCLEAN ISD	54.3%	48	56.4%	61.6%	49	53.7%	-2.7%	15	\$ 4,360
MCLEOD ISD	41.8%	41	33.9%	*	*	*	*	*	*
MEADOW ISD	77.0%	219	100.0%	95.9%	254	100.4%	0.4%	-	-
Meadow Oaks Education Foundation	*	5	22.2%	60.8%	57	25.0%	2.8%	103	\$ 29,142
MEDINA ISD	61.8%	73	49.1%	59.8%	82	57.8%	8.7%	17	\$ 4,934
MEDINA VALLEY ISD	53.9%	1,023	51.9%	55.8%	1,195	52.5%	0.6%	400	\$ 115,505
MELISSA ISD	19.0%	177	57.4%	22.2%	71	41.5%	-15.9%	49	\$ 13,980
MEMPHIS ISD	73.8%	327	154.0%	74.9%	300	145.9%	-8.1%	-	-
MENARD ISD	72.2%	97	69.1%	76.4%	102	70.3%	1.2%	-	-
MERCEDES ISD	100.0%	4,108	88.2%	100.0%	3,632	84.9%	-3.3%	-	-
Meridell Achievement Center, Inc	*	*	*	100.0%	107	105.9%		-	-
MERIDIAN ISD	68.7%	126	50.6%	68.6%	124	49.9%	-0.7%	50	\$ 14,601
MERIDIAN WORLD SCHOOL LLC	8.4%	*	*	11.0%	25	20.9%		60	\$ 16,481
MERKEL ISD	59.3%	272	58.8%	69.1%	292	61.4%	2.6%	41	\$ 11,564
MESQUITE ISD	78.5%	9,044	38.3%	78.5%	9,378	39.5%	1.2%	7,230	\$ 2,077,904
MEXIA ISD	71.0%	916	87.7%	96.2%	1,367	97.7%	10.0%	-	-
MEYERPARK ELEMENTARY	92.2%	130	80.1%	92.1%	121	66.1%	-14.0%	7	\$ 2,279
MEYERSVILLE ISD	31.3%	14	51.9%	56.5%	34	59.1%	7.2%	6	\$ 1,727
MIAMI ISD	21.5%	22	63.9%	32.0%	25	58.7%	-5.2%	5	\$ 1,318
MIDLAND ACADEMY CHARTER SCHOOL	58.6%	194	98.1%	47.8%	153	101.7%	3.6%	-	-
MIDLAND ISD	53.3%	7,356	82.3%	46.7%	6,850	80.5%	-1.8%	-	-
MIDLOTHIAN ISD	23.7%	505	40.3%	25.7%	617	42.1%	1.8%	408	\$ 117,240
MIDWAY ISD-HENRIETTA	40.0%	38	74.7%	59.8%	36	59.2%	-15.5%	6	\$ 1,937
MIDWAY ISD-WACO	32.4%	770	41.0%	36.5%	962	46.9%	5.9%	474	\$ 137,768
MILANO ISD	62.1%	54	32.5%	60.6%	86	44.0%	11.5%	51	\$ 14,738
MILDRED ISD	41.9%	126	59.4%	45.2%	164	73.9%	14.5%	-	-
MILES ISD	36.6%	29	23.5%	36.6%	31	24.3%	0.8%	58	\$ 16,466
MILFORD ISD	76.2%	88	60.0%	87.5%	83	63.1%	3.1%	9	\$ 3,013
MILLER GROVE ISD	65.1%	76	52.9%	52.1%	90	70.7%	17.8%	-	-
MILLSAP ISD	50.7%	161	52.1%	50.4%	175	47.5%	-4.6%	83	\$ 23,425

District	2016-2017			2018-2019			Change in Ratio of SBP to NSLP Participation	Additional Students if 70% Met	Additional Dollars if 70% Met
	% FR Eligible	FR Breakfast ADP	FR Students in SBP per 100 in NSLP	% FR Eligible	FR Breakfast ADP	FR Students in SBP per 100 NSLP			
MINEOLA ISD	67.6%	292	41.9%	67.2%	359	52.0%	10.1%	124	\$ 34,169
MINERAL WELLS ISD	72.2%	1,086	59.1%	74.9%	951	55.3%	-3.8%	253	\$ 71,210
MISSION CONS ISD	86.8%	10,551	88.7%	100.0%	10,182	77.3%	-11.4%	-	-
MOMENTOUS INSTITUTE	*	*	*	73.1%	99	64.7%		8	\$ 2,239
MONAHANS-WICKETT-PYOTE ISD	62.1%	388	46.4%	59.1%	425	54.8%	8.4%	118	\$ 29,303
MONTAGUE ISD	51.0%	39	70.9%	48.5%	33	61.7%	-9.2%	4	\$ 1,272
MONTE ALTO ISD	100.0%	947	102.0%	100.0%	824	100.7%	-1.3%	-	-
MONTESSORI FOR ALL, Inc.	40.0%	35	39.3%	54.6%	80	67.2%	27.9%	3	\$ 926
MONTGOMERY COUNTY JUVENILE DEPARTMENT	*	*	*	100.0%	31	104.6%		-	-
MONTGOMERY ISD	24.8%	835	54.9%	27.6%	1,043	59.9%	5.0%	175	\$ 50,285
MOODY ISD	67.7%	312	82.9%	66.5%	354	92.0%	9.1%	-	-
MORAN ISD	95.8%	69	90.4%	91.1%	61	82.4%	-8.0%	-	-
MORGAN ISD	90.4%	56	57.0%	78.3%	46	56.3%	-0.7%	11	\$ 3,299
MORGAN MILL ISD	39.8%	9	53.6%	58.5%	23	52.0%	-1.6%	8	\$ 2,252
MORTON ISD	78.2%	303	96.9%	100.0%	707	198.1%	101.2%	-	-
MOST HOLY TRINITY SCHOOL	*	*	*	55.2%	18	30.1%		24	\$ 6,349
MOTLEY COUNTY ISD	75.2%	87	109.2%	77.2%	79	102.5%	-6.7%	-	-
MOULTON ISD	54.0%	63	57.4%	59.1%	57	50.6%	-6.8%	22	\$ 6,293
MOUNT CALM ISD	83.8%	89	75.1%	87.9%	96	73.6%	-1.5%	-	-
MOUNT ENTERPRISE ISD	56.8%	74	41.6%	66.6%	143	68.7%	27.1%	3	\$ 778
MOUNT PLEASANT ISD	78.9%	1,832	54.7%	95.5%	1,985	52.2%	-2.5%	675	\$ 190,771
MOUNT VERNON ISD	61.3%	353	61.5%	61.0%	335	57.2%	-4.3%	75	\$ 20,861
MUENSTER ISD	14.5%	14	22.4%	22.0%	21	29.0%	6.6%	30	\$ 8,251
MULESHOE ISD	82.9%	681	66.4%	86.9%	637	50.4%	-16.0%	248	\$ 71,044
MULLIN ISD	85.3%	50	71.7%	84.3%	28	44.9%	-26.8%	16	\$ 4,439
MUMFORD ISD	74.0%	294	78.2%	73.7%	292	77.6%	-0.6%	-	-
MUNDAY ISD	66.2%	187	100.3%	73.5%	194	94.8%	-5.5%	-	-
MURCHISON ISD	64.3%	34	43.5%	72.8%	51	61.6%	18.1%	7	\$ 1,937
NACOGDOCHES ISD	78.7%	3,169	71.5%	100.0%	3,220	65.1%	-6.4%	242	\$ 71,226
NATALIA ISD	78.3%	761	106.7%	87.4%	835	104.2%	-2.5%	-	-
NAVARRO ISD	36.9%	215	43.1%	35.9%	237	44.3%	1.2%	137	\$ 39,209
NAVASOTA ISD	79.4%	996	51.0%	93.5%	1,082	49.4%	-1.6%	452	\$ 134,262
NAZARETH ACADEMY	*	*	*	10.3%	*	*		*	*
NAZARETH ISD	18.4%	7	23.2%	18.1%	7	26.7%	3.5%	11	\$ 3,321
NECHES ISD	47.4%	59	46.0%	49.9%	74	55.6%	9.6%	19	\$ 5,270
NEDERLAND ISD	41.2%	665	40.6%	46.6%	763	42.4%	1.8%	497	\$ 144,157
NEEDVILLE ISD	40.5%	406	47.6%	44.6%	414	44.0%	-3.6%	244	\$ 71,442
NEIGHBORHOOD CENTERS INC.	100.0%	702	87.6%	*	*	*		*	*
NEIGHBORS UNITED FOR QUALITY EDUCATION, INC.	64.4%	97	83.8%	*	*	*		*	*
NEW BRAUNFELS ISD	36.4%	931	43.7%	39.8%	1,129	48.2%	4.5%	510	\$ 151,148
NEW CANEY ISD	64.5%	3,823	53.2%	67.4%	4,183	50.8%	-2.4%	1,579	\$ 446,418
NEW DEAL ISD	62.2%	294	95.2%	67.7%	277	92.4%	-2.8%	-	-
NEW DIANA ISD	39.4%	194	63.1%	42.9%	214	62.1%	-1.0%	27	\$ 7,759
NEW FRONTIERS CHARTER SCHOOL, S.A.	87.3%	366	67.5%	*	*	*		*	*
NEW FRONTIERS PUBLIC SCHOOLS INC	*	*	*	90.5%	308	71.5%		-	-
NEW HOME ISD	25.1%	24	36.5%	25.6%	23	36.1%	-0.4%	22	\$ 6,068
NEW HORIZONS RANCH AND CENTER INC	*	*	*	100.0%	64	100.6%		-	-
NEW SUMMERFIELD ISD	92.1%	258	61.3%	91.9%	234	56.5%	-4.8%	56	\$ 15,151
NEW WAVERLY ISD	53.2%	215	56.7%	62.6%	225	58.6%	1.9%	44	\$ 12,378
NEWCASTLE ISD	65.9%	120	118.8%	61.4%	91	109.0%	-9.8%	-	-
NEWMAN INTERNATIONAL SCHOOL OF ARLINGTON	41.2%	160	27.8%	48.7%	230	29.8%	2.0%	310	\$ 86,808
NEWTON ISD	81.8%	542	78.1%	100.0%	911	98.5%	20.4%	-	-
NIXON-SMILEY CONS ISD	82.7%	769	108.0%	98.3%	964	103.4%	-4.6%	-	-
NOCONA ISD	61.7%	188	58.2%	64.2%	198	64.3%	6.1%	18	\$ 4,969
NORDHEIM ISD	63.8%	36	52.3%	92.0%	44	47.5%	-4.8%	21	\$ 6,418
NORMANGEE ISD	55.3%	105	48.4%	53.6%	121	52.2%	3.8%	41	\$ 11,620
NORTH EAST ISD	48.6%	9,654	38.3%	55.5%	11,092	40.8%	2.5%	7,922	\$ 2,311,080

District	2016-2017			2018-2019			Change in Ratio of SBP to NSLP Participation	Additional Students if 70% Met	Additional Dollars if 70% Met
	% FR Eligible	FR Breakfast ADP	FR Students in SBP per 100 in NSLP	% FR Eligible	FR Breakfast ADP	FR Students in SBP per 100 NSLP			
NORTH HOPKINS ISD	63.6%	205	83.8%	62.7%	207	89.2%	5.4%	-	-
NORTH LAMAR ISD	49.3%	557	57.7%	51.5%	485	55.7%	-2.0%	125	\$ 35,611
North Texas Collegiate Academy	*	*	*	88.0%	176	51.6%		63	\$ 18,302
NORTH ZULCH ISD	100.0%	161	58.2%	74.8%	85	43.0%	-15.2%	53	\$ 15,553
NORTHSIDE ISD-SAN ANTONIO	51.9%	18,128	46.3%	57.2%	19,224	46.4%	0.1%	9,798	\$ 2,918,400
NORTHSIDE ISD-VERNON	31.9%	24	41.9%	41.2%	33	46.9%	5.0%	16	\$ 4,532
NORTHWEST ISD	20.1%	1,088	47.5%	25.5%	1,122	41.0%	-6.5%	792	\$ 229,326
NOVA CHARTER SCHOOL (SOUTHEAST)	75.9%	165	35.5%	99.7%	137	31.0%	-4.5%	173	\$ 50,455
NOVA SCHOOLS, WEST OAK CLIFF	100.0%	54	36.9%	93.3%	35	37.9%	1.0%	30	\$ 8,593
NUECES CANYON CONS ISD	82.7%	108	71.1%	83.1%	117	78.6%	7.5%	-	-
NUECES COUNTY JUVENILE PROBATION DEPT	*	*	*	43.0%	35	101.5%		-	-
NURSERY ISD	65.4%	38	74.5%	58.8%	40	68.3%	-6.2%	1	\$ 278
NYOS CHARTER SCHOOL INC.	31.0%	73	49.5%	34.1%	51	34.1%	-15.4%	54	\$ 14,026
O'DONNELL ISD	72.6%	110	69.7%	83.0%	130	71.9%	2.2%	-	-
OAKWOOD ISD	87.7%	128	91.1%	83.4%	107	75.4%	-15.7%	-	-
ODEM-EDROY ISD	78.1%	209	35.3%	100.0%	433	63.1%	27.8%	47	\$ 13,806
ODYSSEY 2020 ACADEMY, INC.	78.0%	402	66.4%	68.1%	384	67.0%	0.6%	17	\$ 4,940
OGLESBY ISD	65.0%	103	123.0%	82.7%	116	118.4%	-4.6%	-	-
OLFEN ISD	100.0%	63	96.3%	64.0%	50	91.9%	-4.4%	-	-
OLNEY ISD	65.9%	210	71.6%	66.9%	173	63.6%	-8.0%	17	\$ 4,936
OLTON ISD	72.6%	231	69.9%	74.9%	348	121.9%	52.0%	-	-
ONALASKA ISD	74.0%	446	81.6%	100.0%	759	85.6%	4.0%	-	-
ORANGE GROVE ISD	58.6%	731	85.0%	62.8%	568	69.3%	-15.7%	6	\$ 1,672
ORANGEFIELD ISD	34.5%	219	47.3%	45.5%	265	46.0%	-1.3%	138	\$ 39,616
ORE CITY ISD	78.0%	259	48.3%	71.7%	284	55.1%	6.8%	77	\$ 21,731
OUR LADY OF PERPETUAL HELP CATHOLIC SCHOOL	*	*	*	80.5%	105	78.3%		-	-
OVERTON ISD	64.4%	111	63.3%	75.6%	133	74.2%	10.9%	-	-
PADUCAH ISD	75.4%	82	92.5%	92.2%	100	107.5%	15.0%	-	-
PAINT CREEK ISD	78.6%	89	99.0%	86.7%	81	92.7%	-6.3%	-	-
PAINT ROCK ISD	79.7%	103	74.9%	74.9%	89	71.4%	-3.5%	-	-
PALACIOS ISD	67.6%	721	92.9%	100.0%	1,175	101.3%	8.4%	-	-
PALESTINE ISD	77.6%	1,184	58.9%	74.9%	1,134	59.6%	0.7%	199	\$ 57,016
PALMER ISD	52.0%	250	61.9%	59.4%	264	59.5%	-2.4%	47	\$ 13,292
PALO PINTO ISD	63.3%	46	79.8%	67.0%	36	73.4%	-6.4%	-	-
PAMPA ISD	61.2%	1,144	72.7%	60.0%	1,051	72.4%	-0.3%	-	-
PANHANDLE ISD	30.0%	65	53.9%	37.7%	71	58.4%	4.5%	14	\$ 4,069
PANTHER CREEK CONS ISD	77.0%	73	75.7%	92.0%	78	69.4%	-6.3%	1	\$ 179
PARADISE ISD	32.3%	93	41.8%	35.0%	117	38.7%	-3.1%	94	\$ 26,258
PARIS ISD	92.5%	1,729	64.4%	100.0%	1,882	63.5%	-0.9%	193	\$ 56,379
PASADENA ISD	74.8%	18,286	51.5%	79.0%	17,368	50.4%	-1.1%	6,753	\$ 1,882,361
PATHWAYS YOUTH & FAMILY SERVICES INC	*	*	*	100.0%	24	100.8%		-	-
PATTON SPRINGS ISD	90.3%	57	74.2%	83.5%	53	75.1%	0.9%	-	-
PAWNEE ISD	63.4%	55	81.8%	95.5%	101	78.9%	-2.9%	-	-
PEARLAND ISD	29.1%	1,807	40.1%	31.6%	2,124	43.0%	2.9%	1,335	\$ 377,722
PEARSALL ISD	78.6%	1,195	90.4%	100.0%	1,684	105.9%	15.5%	-	-
PEASTER ISD	36.2%	108	43.2%	35.3%	115	44.1%	0.9%	67	\$ 19,252
PECOS-BARSTOW-TOYAH ISD	67.2%	973	82.4%	72.0%	1,158	81.3%	-1.1%	-	-
PEGASUS SCHOOLS INC	*	*	*	100.0%	167	104.8%		-	-
PENELOPE ISD	72.3%	96	76.3%	68.4%	78	81.4%	5.1%	-	-
PERRIN-WHITT CONS ISD	57.8%	81	52.4%	62.7%	85	54.1%	1.7%	25	\$ 7,091
PERRYTON ISD	62.5%	483	47.8%	60.0%	401	42.8%	-5.0%	255	\$ 70,935
PETERSBURG ISD	75.4%	176	115.4%	92.9%	252	118.3%	2.9%	-	-
PETROLIA ISD	52.5%	244	126.9%	64.4%	214	127.1%	0.2%	-	-
PETTUS ISD	73.1%	109	53.6%	100.0%	152	52.7%	-0.9%	50	\$ 14,448
PEWITT CONS ISD	70.2%	275	56.3%	74.0%	254	55.0%	-1.3%	70	\$ 19,899
PFLUGERVILLE ISD	51.0%	5,022	55.1%	52.5%	5,466	56.7%	1.6%	1,278	\$ 369,397
PHARR-SAN JUAN-ALAMO ISD	93.4%	15,232	65.2%	98.7%	20,245	82.0%	16.8%	-	-
PHOENIX HOUSES OF TEXAS, INC.	*	*	*	100.0%	51	101.7%		-	-
PILOT POINT ISD	57.2%	224	45.8%	59.1%	209	42.9%	-2.9%	132	\$ 38,103

District	2016-2017			2018-2019			Change in Ratio of SBP to NSLP Participation	Additional Students if 70% Met	Additional Dollars if 70% Met
	% FR Eligible	FR Breakfast ADP	FR Students in SBP per 100 in NSLP	% FR Eligible	FR Breakfast ADP	FR Students in SBP per 100 NSLP			
PINE TREE ISD	66.6%	1,267	61.3%	67.4%	1,440	64.7%	3.4%	119	\$ 34,751
PINEYWOODS COMMUNITY ACADEMY	53.4%	122	35.9%	56.5%	132	37.4%	1.5%	115	\$ 32,551
PITTSBURG ISD	78.4%	654	46.5%	78.5%	635	46.3%	-0.2%	325	\$ 93,239
PLAINS ISD	49.1%	145	74.1%	68.6%	248	112.5%	38.4%	-	-
PLAINVIEW ISD	72.1%	2,841	87.5%	74.5%	2,241	84.8%	-2.7%	-	-
PLANO ISD	28.8%	4,658	39.7%	32.2%	5,458	44.2%	4.5%	3,186	\$ 859,443
PLEASANT GROVE ISD	40.9%	170	39.4%	35.2%	196	40.1%	0.7%	146	\$ 40,522
PLEASANTON ISD	64.2%	1,676	112.5%	62.3%	1,490	96.9%	-15.6%	-	-
PLEMONS-STINNETT-PHILLIPS	37.6%	152	91.8%	43.1%	155	90.6%	-1.2%	-	-
POINT ISABEL ISD	100.0%	1,867	97.6%	100.0%	1,640	90.0%	-7.6%	-	-
PONDER ISD	39.2%	191	45.6%	43.6%	211	44.7%	-0.9%	120	\$ 33,487
POOLVILLE ISD	55.9%	108	51.2%	59.4%	122	55.6%	4.4%	32	\$ 9,185
POR VIDA ACADEMY CHARTER H S	65.7%	40	59.8%	69.8%	34	35.9%	-23.9%	33	\$ 9,862
PORT ARANSAS ISD	32.0%	50	48.4%	100.0%	182	76.4%	28.0%	-	-
PORT ARTHUR ISD	76.8%	3,357	50.5%	78.9%	2,723	48.5%	-2.0%	1,203	\$ 339,156
PORT NECHES-GROVES ISD	38.1%	533	38.5%	47.2%	605	38.8%	0.3%	485	\$ 141,378
POST ISD	69.2%	110	33.7%	86.6%	264	73.7%	40.0%	-	-
POTEET ISD	75.9%	817	78.7%	79.3%	959	91.4%	12.7%	-	-
POTH ISD	45.8%	123	46.9%	37.0%	127	49.2%	2.3%	54	\$ 15,024
POTTSBORO ISD	37.5%	248	62.4%	41.4%	255	63.2%	0.8%	27	\$ 7,654
PRAIRIE LEA ISD	100.0%	176	95.2%	87.2%	130	83.2%	-12.0%	-	-
PRAIRIE VALLEY ISD	63.2%	43	64.6%	66.0%	52	73.4%	8.8%	-	-
PRAIRILAND ISD	54.9%	288	75.7%	55.3%	271	75.3%	-0.4%	-	-
PREMIER HIGH SCHOOL	54.7%	407	68.8%	67.1%	458	35.2%	-33.6%	452	\$ 104,187
PREMONT ISD	89.9%	367	94.3%	100.0%	367	72.2%	-22.1%	-	-
PRESBYTERIAN PAN AMERICAN SCHOOL	*	*	*	75.9%	96	96.7%	-	-	-
PRESIDIO ISD	94.4%	596	53.6%	94.6%	570	59.0%	5.4%	106	\$ 32,083
PRIDDY ISD	75.7%	52	79.9%	64.4%	44	83.8%	3.9%	-	-
PRINCETON ISD	63.0%	850	45.2%	60.3%	1,073	49.9%	4.7%	432	\$ 127,996
PRINGLE-MORSE CONS ISD	58.8%	64	95.4%	75.4%	64	86.2%	-9.2%	-	-
PRIORITY SYSTEMS, INC.	42.1%	245	86.4%	46.7%	195	73.3%	-13.1%	-	-
PRO-VISION EDUCATIONAL SERVICES	90.9%	124	58.6%	82.0%	129	56.1%	-2.5%	32	\$ 9,487
PROGRESO ISD	100.0%	1,288	81.2%	100.0%	1,277	84.3%	3.1%	-	-
PROSPER ISD	7.3%	140	57.5%	7.1%	124	31.9%	-25.6%	148	\$ 41,978
QUANAH ISD	81.6%	316	87.6%	80.1%	294	92.7%	5.1%	-	-
QUEEN CITY ISD	57.6%	221	55.7%	62.7%	259	59.9%	4.2%	44	\$ 12,840
QUINLAN ISD	70.6%	570	47.4%	74.5%	652	50.6%	3.2%	250	\$ 71,891
QUITMAN ISD	59.8%	326	71.9%	61.9%	395	77.9%	6.0%	-	-
RAINS ISD	58.5%	410	58.2%	63.6%	426	59.2%	1.0%	78	\$ 22,707
RALLS ISD	100.0%	463	102.7%	99.4%	416	94.0%	-8.7%	-	-
RAMIREZ CSD	100.0%	25	96.1%	100.0%	25	96.6%	0.5%	-	-
RANGER ISD	76.2%	127	61.2%	76.6%	104	55.0%	-6.2%	28	\$ 8,492
RANKIN ISD	48.6%	81	94.8%	51.5%	93	110.6%	15.8%	-	-
RAPOPORT ACADEMY	71.5%	249	55.1%	72.5%	250	55.7%	0.6%	64	\$ 17,596
RAYMONDVILLE ISD	100.0%	1,402	87.5%	100.0%	1,546	91.1%	3.6%	-	-
REAGAN COUNTY ISD	63.1%	299	73.3%	73.1%	318	74.2%	0.9%	-	-
RECONCILIATION ACADEMY, INC.	94.0%	94	19.7%	*	*	*	*	*	*
RED OAK ISD	52.6%	580	41.1%	57.1%	660	41.9%	0.8%	443	\$ 123,493
REFUGIO ISD	67.0%	164	51.5%	100.0%	253	69.4%	17.9%	2	\$ 518
RICARDO ISD	60.6%	157	43.4%	96.1%	249	46.1%	2.7%	129	\$ 36,542
RICE CONS ISD	77.9%	430	56.6%	95.1%	531	56.0%	-0.6%	132	\$ 39,511
RICE ISD	73.2%	211	42.2%	75.8%	253	47.5%	5.3%	119	\$ 32,412
RICHARD MILBURN ACADEMY TEXAS, INC.	72.5%	162	51.1%	87.4%	171	*	*	*	*
RICHARDS ISD	75.8%	47	55.0%	77.7%	55	53.4%	-1.6%	17	\$ 5,063
RICHARDSON ISD	54.9%	6,070	38.5%	56.5%	7,196	46.6%	8.1%	3,603	\$ 1,032,993
RICHLAND SPRINGS ISD	55.4%	36	70.5%	66.7%	36	64.0%	-6.5%	3	\$ 961
RIESEL ISD	42.1%	96	47.3%	49.7%	120	48.5%	1.2%	53	\$ 15,245
RIO GRANDE CITY ISD	96.8%	8,027	89.5%	100.0%	7,181	87.4%	-2.1%	-	-
RIO HONDO ISD	91.3%	1,374	85.6%	94.3%	1,309	85.6%	0.0%	-	-

District	2016-2017			2018-2019			Change in Ratio of SBP to NSLP Participation	Additional Students if 70% Met	Additional Dollars if 70% Met
	% FR Eligible	FR Breakfast ADP	FR Students in SBP per 100 in NSLP	% FR Eligible	FR Breakfast ADP	FR Students in SBP per 100 NSLP			
RIO VISTA ISD	52.8%	165	61.1%	67.6%	156	59.8%	-1.3%	26	\$ 7,436
RISING STAR ISD	70.9%	73	80.8%	71.3%	93	91.4%	10.6%	-	-
RIVER ROAD ISD	66.1%	452	68.7%	67.5%	487	76.0%	7.3%	-	-
RIVERCREST ISD	56.8%	152	56.7%	60.8%	151	48.1%	-8.6%	69	\$ 19,289
RIVERTREE ACADEMY	*	*	*	89.7%	29	*		*	*
RIVERWALK EDUCATION FOUNDATION, INC.	46.9%	129	34.0%	69.9%	782	44.9%	10.9%	438	\$ 125,264
RIVERWALK EDUCATION FOUNDATION, INC.	53.9%	209	38.2%	69.9%	782	44.9%	6.7%	438	\$ 125,264
RIVIERA ISD	69.0%	84	38.7%	95.6%	115	36.8%	-1.9%	104	\$ 28,548
ROBERT LEE ISD	61.2%	79	80.3%	62.2%	72	78.0%	-2.3%	-	-
ROBINSON ISD	35.1%	239	45.0%	36.4%	257	46.2%	1.2%	132	\$ 37,533
ROBSTOWN ISD	100.0%	1,811	81.2%	100.0%	1,906	88.4%	7.2%	-	-
ROBY CONS ISD	56.4%	71	88.6%	44.8%	85	95.5%	6.9%	-	-
ROCHELLE ISD	90.2%	108	81.4%	90.1%	95	72.1%	-9.3%	-	-
ROCKDALE ISD	70.5%	525	63.9%	73.7%	586	68.5%	4.6%	13	\$ 3,594
ROCKSPRINGS ISD	75.0%	125	84.4%	75.0%	108	81.7%	-2.7%	-	-
ROCKWALL ISD	26.5%	1,426	47.3%	25.3%	1,481	46.5%	-0.8%	750	\$ 217,070
ROGERS ISD	50.1%	148	52.4%	61.9%	138	47.6%	-4.8%	65	\$ 18,442
ROMA ISD	100.0%	4,840	87.0%	99.5%	4,473	83.4%	-3.6%	-	-
ROOSEVELT ISD	77.1%	522	87.0%	77.1%	519	87.9%	0.9%	-	-
ROPES ISD	*	*	*	47.2%	62	44.9%		34	\$ 9,832
ROPESVILLE ISD	45.3%	47	41.3%	*	*	*		*	*
ROSCOE COLLEGIATE ISD	*	*	*	52.1%	132	57.2%		30	\$ 8,571
ROSCOE ISD	47.8%	99	47.9%	*	*	*		*	*
ROSEBUD-LOTT ISD	74.1%	247	73.2%	68.3%	218	64.7%	-8.5%	18	\$ 4,983
ROTAN ISD	58.7%	89	100.1%	69.4%	81	88.0%	-12.1%	-	-
ROUND ROCK ISD	29.2%	5,107	51.7%	29.4%	5,756	53.7%	2.0%	1,748	\$ 487,217
ROUND TOP-CARMINE ISD	39.5%	34	43.1%	43.7%	39	43.2%	0.1%	24	\$ 6,783
ROXTON ISD	77.8%	85	82.8%	82.3%	70	78.5%	-4.3%	-	-
ROY MAAS YOUTH ALTERNATIVES, INC	*	*	*	81.9%	84	102.6%		-	-
ROYAL ISD	83.4%	743	53.3%	86.9%	1,118	81.9%	28.6%	-	-
ROYSE CITY ISD	38.8%	626	44.5%	42.1%	798	47.8%	3.3%	371	\$ 103,118
RULE ISD	87.1%	101	109.2%	86.1%	99	116.6%	7.4%	-	-
RUNGE ISD	92.0%	210	101.4%	100.0%	207	100.8%	-0.6%	-	-
RUSK ISD	64.1%	712	69.5%	67.4%	713	72.8%	3.3%	-	-
S AND S CISD	54.9%	257	70.8%	56.4%	270	65.2%	-5.6%	20	\$ 5,621
SABINAL ISD	76.1%	134	42.9%	76.9%	107	43.2%	0.3%	67	\$ 19,436
SABINE ISD	48.7%	279	52.5%	49.9%	260	48.1%	-4.4%	118	\$ 33,908
SABINE PASS ISD	61.3%	108	64.7%	65.8%	102	60.1%	-4.6%	17	\$ 4,762
SACRED HEART CHURCH	*	*	*	3.4%	*	*		*	*
SACRED HEART SCHOOL-ROCKPORT	*	*	*	100.0%	59	64.5%		5	\$ 1,442
SAINT JO ISD	51.5%	72	79.4%	56.5%	65	58.9%	-20.5%	12	\$ 3,473
SALADO ISD	26.7%	97	36.8%	44.0%	138	47.0%	10.2%	68	\$ 19,564
SALTILLO ISD	69.4%	116	87.3%	71.0%	114	93.9%	6.6%	-	-
SAM RAYBURN ISD	44.2%	95	55.9%	54.9%	109	60.8%	4.9%	17	\$ 4,676
SAN ANGELO ISD	59.7%	4,324	71.1%	60.8%	4,144	72.2%	1.1%	-	-
SAN ANTONIO ISD	96.5%	38,354	94.1%	99.8%	37,071	97.2%	3.1%	-	-
SAN AUGUSTINE ISD	100.0%	416	66.8%	100.0%	364	68.2%	1.4%	10	\$ 2,790
SAN BENITO CONS ISD	100.0%	5,922	64.1%	100.0%	5,679	62.6%	-1.5%	672	\$ 205,021
SAN DIEGO ISD	87.7%	444	44.4%	99.1%	564	47.4%	3.0%	269	\$ 75,985
SAN ELIZARIO ISD	100.0%	2,316	67.5%	100.0%	2,548	79.7%	12.2%	-	-
SAN FELIPE-DEL RIO	71.4%	2,564	42.6%	86.2%	3,139	46.4%	3.8%	1,595	\$ 458,617
SAN ISIDRO ISD	86.1%	187	97.3%	85.7%	176	99.3%	2.0%	-	-
SAN MARCOS CONS ISD	70.4%	2,450	56.2%	82.8%	2,453	52.4%	-3.8%	821	\$ 252,889
SAN PERLITA ISD	84.7%	208	98.6%	100.0%	234	98.8%	0.2%	-	-
SAN SABA ISD	63.8%	223	75.2%	72.4%	221	68.0%	-7.2%	7	\$ 1,840
SANDS ISD	50.6%	60	65.6%	58.3%	79	83.9%	18.3%	-	-
SANFORD-FRITCH ISD	37.6%	112	57.1%	44.4%	104	50.8%	-6.3%	39	\$ 11,233
SANGER ISD	41.3%	398	45.1%	40.1%	361	44.4%	-0.7%	208	\$ 58,718
SANTA ANNA ISD	72.6%	99	73.7%	93.9%	115	67.6%	-6.1%	4	\$ 1,175

District	2016-2017			2018-2019			Change in Ratio of SBP to NSLP Participation	Additional Students if 70% Met	Additional Dollars if 70% Met
	% FR Eligible	FR Breakfast ADP	FR Students in SBP per 100 in NSLP	% FR Eligible	FR Breakfast ADP	FR Students in SBP per 100 NSLP			
SANTA FE ISD	39.4%	617	61.6%	43.5%	697	45.4%	-16.2%	377	\$ 108,395
SANTA GERTRUDIS ISD	30.9%	83	48.1%	49.4%	144	73.9%	25.8%	-	-
SANTA MARIA ISD	100.0%	580	105.4%	95.4%	487	102.9%	-2.5%	-	-
SANTA ROSA ISD	100.0%	744	81.9%	100.0%	777	85.0%	3.1%	-	-
SANTO ISD	48.7%	105	61.5%	49.4%	100	67.9%	6.4%	3	\$ 887
SAVOY ISD	44.9%	66	68.4%	54.0%	77	65.4%	-3.0%	5	\$ 1,551
SCHERTZ-CIBOLO-U CITY ISD	30.4%	1,183	41.7%	32.5%	1,340	43.9%	2.2%	797	\$ 229,699
SCHLEICHER ISD	59.5%	158	69.1%	57.8%	197	114.5%	45.4%	-	-
SCHOOL OF EXCELLENCE ED	100.0%	495	66.3%	100.0%	390	70.3%	4.0%	-	-
SCHULENBURG ISD	56.4%	180	62.4%	63.9%	169	56.1%	-6.3%	42	\$ 11,756
SCURRY-ROSSER ISD	44.1%	172	57.4%	47.8%	165	49.1%	-8.3%	70	\$ 19,651
SEAGRAVES ISD	67.8%	192	72.1%	81.3%	211	65.7%	-6.4%	14	\$ 4,178
SEALY ISD	56.5%	585	47.0%	55.0%	576	50.4%	3.4%	224	\$ 64,894
SEGUIN ISD	62.4%	2,683	75.7%	69.0%	3,117	80.2%	4.5%	-	-
SEMINOLE ISD	53.1%	495	44.8%	53.8%	655	55.3%	10.5%	174	\$ 48,320
SER-NINOS SCH.	96.4%	236	29.2%	97.6%	283	30.4%	1.2%	369	\$ 110,773
SEYMOUR ISD	62.2%	223	81.8%	62.0%	184	68.9%	-12.9%	3	\$ 827
SHALLOWATER ISD	42.7%	373	67.6%	44.5%	463	84.0%	16.4%	-	-
SHAMROCK ISD	66.9%	94	46.5%	66.6%	73	44.7%	-1.8%	41	\$ 11,577
SHARYLAND ISD	63.3%	2,068	44.9%	68.7%	2,950	60.0%	15.1%	490	\$ 145,475
SHEKINAH LEARNING INSTITUTE	76.4%	98	40.8%	*	*	*		*	*
SHELBYVILLE ISD	70.1%	193	47.4%	71.1%	168	43.3%	-4.1%	104	\$ 29,400
SHELDON ISD	82.5%	4,227	77.3%	84.3%	4,679	76.7%	-0.6%	-	-
SHEPHERD ISD	75.0%	543	46.1%	94.9%	708	47.8%	1.7%	328	\$ 94,567
SHERMAN ISD	67.5%	2,556	63.8%	63.9%	2,523	65.5%	1.7%	172	\$ 48,897
SHINER ISD	33.9%	79	54.0%	42.6%	93	54.9%	0.9%	25	\$ 7,329
SHORELINE INC	*	*	*	100.0%	37	101.6%		-	-
SIDNEY ISD	60.6%	22	41.0%	57.2%	17	29.0%	-12.0%	24	\$ 6,563
SIERRA BLANCA ISD	91.1%	97	112.1%	91.2%	93	105.1%	-7.0%	-	-
SILSBEE ISD	54.4%	680	59.2%	58.8%	735	56.4%	-2.8%	177	\$ 51,855
SILVERTON ISD	54.0%	39	51.7%	61.3%	51	64.2%	12.5%	5	\$ 1,292
SIMMS ISD	52.6%	82	47.1%	59.5%	78	40.6%	-6.5%	56	\$ 16,234
SINTON ISD	74.5%	577	47.3%	100.0%	765	45.2%	-2.1%	419	\$ 125,183
SIVELLS BEND ISD	81.7%	47	86.7%	75.0%	34	100.6%	13.9%	-	-
SJRC TEXAS	*	*	*	100.0%	48	116.0%		-	-
SKIDMORE-TYNAN ISD	59.5%	249	67.7%	63.9%	275	68.9%	1.2%	4	\$ 1,241
SLATON ISD	80.6%	643	86.5%	92.1%	807	85.0%	-1.5%	-	-
SLIDELL ISD	57.2%	95	78.8%	53.0%	90	76.9%	-1.9%	-	-
SLOCUM ISD	48.8%	91	71.0%	46.6%	79	74.3%	3.3%	-	-
SMITHVILLE ISD	64.3%	495	58.4%	62.1%	487	59.3%	0.9%	88	\$ 25,541
SMYER ISD	70.3%	165	70.7%	79.4%	180	67.9%	-2.8%	6	\$ 1,614
SNOOK ISD	70.4%	175	67.1%	71.0%	168	64.8%	-2.3%	13	\$ 3,884
SNYDER ISD	60.3%	822	72.8%	74.2%	983	78.9%	6.1%	-	-
SOCORRO ISD	71.4%	21,625	96.5%	76.5%	22,946	96.5%	0.0%	-	-
SOMERSET ISD	75.6%	1,672	63.8%	84.8%	1,848	69.9%	6.1%	3	\$ 778
SOMERVILLE ISD	81.6%	173	58.7%	75.4%	160	50.2%	-8.5%	63	\$ 18,139
SONORA ISD	58.2%	287	84.7%	60.5%	324	100.8%	16.1%	-	-
SOUTH SAN ANTONIO ISD	91.1%	5,496	71.0%	100.0%	5,220	71.0%	0.0%	-	-
SOUTH TEXAS EDUCATIONAL TECH	83.4%	559	65.8%	89.9%	617	63.3%	-2.5%	65	\$ 19,227
SOUTH TEXAS ISD	55.7%	807	72.2%	54.9%	825	60.0%	-12.2%	138	\$ 39,928
SOUTHLAND ISD	82.8%	121	100.2%	82.9%	90	101.5%	1.3%	-	-
SOUTHSIDE ISD	71.1%	2,772	74.4%	92.4%	3,715	91.5%	17.1%	-	-
SOUTHWEST HIGH SCHOOL	93.4%	356	45.8%	*	*	*		*	*
SOUTHWEST ISD	83.8%	5,229	53.2%	95.0%	5,538	53.3%	0.1%	1,739	\$ 517,563
SOUTHWEST KEY PROGRAMS, INC.	*	*	*	100.0%	3,715	101.3%		-	-
SOUTHWEST PREPARATORY SCHOOL	76.2%	182	40.6%	81.5%	153	32.2%	-8.4%	179	\$ 52,545
SOUTHWEST SCHOOLS	*	*	*	88.3%	457	44.3%		265	\$ 78,632
SPEARMAN ISD	63.3%	136	34.7%	68.8%	222	50.2%	15.5%	88	\$ 24,831
SPLENDORA ISD	57.4%	1,249	71.7%	65.0%	1,309	68.2%	-3.5%	35	\$ 9,850
SPRING BRANCH ISD	60.9%	8,603	49.3%	67.2%	9,054	49.0%	-0.3%	3,881	\$ 1,118,075
SPRING CREEK ISD	21.0%	9	50.2%	34.8%	15	59.3%	9.1%	3	\$ 711
SPRING HILL ISD	43.6%	286	48.2%	48.6%	354	53.6%	5.4%	108	\$ 30,790

District	2016-2017			2018-2019			Change in Ratio of SBP to NSLP Participation	Additional Students if 70% Met	Additional Dollars if 70% Met
	% FR Eligible	FR Breakfast ADP	FR Students in SBP per 100 in NSLP	% FR Eligible	FR Breakfast ADP	FR Students in SBP per 100 NSLP			
SPRING ISD	72.4%	14,907	65.6%	92.0%	18,016	68.5%	2.9%	385	\$ 109,953
SPRINGLAKE-EARTH ISD	73.3%	147	74.1%	78.1%	360	107.1%	33.0%	-	-
SPRINGTOWN ISD	54.6%	432	33.9%	51.4%	390	34.6%	0.7%	399	\$ 114,023
SPUR ISD	56.1%	102	77.4%	62.6%	88	80.5%	3.1%	-	-
SPURGER ISD	65.2%	118	64.3%	100.0%	297	117.1%	52.8%	-	-
ST ANTHONY ACADEMY	63.3%	57	39.0%	70.0%	48	32.7%	-6.3%	54	\$ 14,873
ST ANTHONY SCHOOL	*	*	*	61.2%	18	30.1%		24	\$ 6,692
ST ANTHONY'S SCHOOL	*	*	*	6.8%	*	*		*	*
ST JOSEPH ALAMO CATHOLIC SCHOOL	*	*	*	27.4%	*	*		*	*
ST LOUIS ELEMENTARY SCHOOL	*	*	*	24.6%	*	*		*	*
ST MARY ACADEMY	80.4%	162	57.7%	86.5%	192	62.7%	5.0%	22	\$ 6,036
ST MARY OF CARMEL SCHOOL	*	*	*	62.3%	*	*		*	*
ST MARY SCHOOL	*	*	*	42.0%	*	*		*	*
ST MATTHEW CATHOLIC SCHOOL	*	*	*	4.3%	4	21.0%		9	\$ 2,620
ST PAUL LUTHERAN SCHOOL	*	*	*	0.9%	*	*		*	*
ST PETER - ST JOSEPH CHILDREN'S HOME	*	*	*	100.0%	113	111.2%		-	-
ST RAPHAEL'S SCHOOL	*	*	*	16.5%	*	*		*	*
ST ROSE OF LIMA SCHOOL	*	*	*	13.7%	*	*		*	*
STAFFORD MSD	66.7%	1,141	62.5%	73.4%	1,104	57.3%	-5.2%	245	\$ 67,567
STAMFORD ISD	66.4%	373	125.9%	68.9%	333	111.9%	-14.0%	-	-
STANTON ISD	58.9%	148	40.5%	63.5%	194	43.1%	2.6%	121	\$ 34,115
STEPHENVILLE ISD	45.4%	554	45.1%	51.4%	626	48.8%	3.7%	273	\$ 77,690
STEPPING STONES CHARTER EL	96.2%	80	23.8%	93.7%	112	28.0%	4.2%	168	\$ 50,057
STERLING CITY ISD	45.4%	32	42.5%	49.2%	28	30.0%	-12.5%	37	\$ 10,536
STOCKDALE ISD	54.0%	283	95.4%	55.1%	267	90.8%	-4.6%	-	-
STRATFORD ISD	59.7%	111	41.1%	60.2%	118	42.6%	1.5%	76	\$ 21,805
STRAWN ISD	62.0%	76	93.6%	73.5%	50	73.3%	-20.3%	-	-
SUDAN ISD	56.6%	130	62.5%	54.1%	188	63.3%	0.8%	20	\$ 3,817
SULPHUR BLUFF ISD	54.4%	67	73.8%	59.9%	76	73.7%	-0.1%	-	-
SULPHUR SPRINGS ISD	66.4%	1,238	54.4%	77.2%	1,221	51.7%	-2.7%	434	\$ 121,877
SUNDOWN ISD	43.7%	94	51.6%	46.0%	83	39.1%	-12.5%	65	\$ 18,645
SUNNYVALE ISD	16.5%	69	34.0%	18.7%	49	22.0%	-12.0%	106	\$ 30,558
SUNRAY ISD	57.6%	134	72.9%	63.6%	174	107.0%	34.1%	-	-
SUSTAINABLE EDUCATION SOLUTIONS	90.0%	87	56.9%	94.1%	157	71.9%	15.0%	-	-
SWEENEY ISD	53.0%	412	54.5%	52.7%	392	53.4%	-1.1%	122	\$ 34,209
SWEET HOME ISD	15.6%	8	50.5%	20.4%	12	56.0%	5.5%	3	\$ 817
SWEETWATER ISD	70.6%	1,110	83.3%	74.7%	865	70.0%	-13.3%	-	-
TAFT ISD	78.6%	728	105.9%	100.0%	786	94.5%	-11.4%	-	-
TAHOKA ISD	58.4%	228	108.6%	100.0%	365	113.2%	4.6%	-	-
TARKINGTON ISD	50.0%	416	60.1%	57.2%	455	63.9%	3.8%	43	\$ 12,595
TARRANT COUNTY JUVENILE BOARD	*	*	*	92.9%	125	93.4%		-	-
TATUM ISD	58.5%	429	55.3%	58.4%	362	51.8%	-3.5%	127	\$ 36,631
TAYLOR COUNTY JUVENILE PROBATION DEPARTMENT	*	*	*	100.0%	14	100.6%		-	-
TAYLOR ISD	62.1%	1,124	76.0%	63.8%	1,276	83.9%	7.9%	-	-
TEAGUE ISD	57.6%	345	65.8%	61.5%	271	54.9%	-10.9%	75	\$ 21,507
TEJANO CENTER FOR COMMUNITY CONCERNS, INC.	96.5%	604	52.0%	100.0%	924	77.1%	25.1%	-	-
TEKOA CHARTER SCHOOL	100.0%	367	81.0%	100.0%	292	81.4%	0.4%	-	-
TEMPLE ISD	78.1%	2,706	56.2%	77.0%	2,892	62.1%	5.9%	366	\$ 108,482
TENAHA ISD	91.9%	260	56.7%	90.5%	236	56.8%	0.1%	55	\$ 16,215
TERLINGUA CSD	77.1%	27	*	73.3%	26	*		*	*
TERRELL COUNTY ISD	50.7%	36	*	51.2%	50	*		*	*
TERRELL ISD	76.9%	1,332	53.8%	80.4%	1,938	63.7%	9.9%	192	\$ 45,812
TEXANS CAN ACADEMIES	63.9%	869	90.7%	89.4%	945	82.1%	-8.6%	-	-
TEXARKANA ISD	70.5%	3,626	59.1%	76.7%	4,281	59.9%	0.8%	722	\$ 205,729
TEXAS BOYS RANCH, INC	*	*	*	100.0%	24	168.3%		-	-
TEXAS CHALLENGE ACADEMY	*	*	*	100.0%	101	102.3%		-	-
TEXAS CITY ISD	72.3%	3,025	58.9%	78.3%	3,181	61.2%	2.3%	458	\$ 132,596

District	2016-2017			2018-2019			Change in Ratio of SBP to NSLP Participation	Additional Students if 70% Met	Additional Dollars if 70% Met
	% FR Eligible	FR Breakfast ADP	FR Students in SBP per 100 in NSLP	% FR Eligible	FR Breakfast ADP	FR Students in SBP per 100 NSLP			
TEXAS COLLEGE PREPARATORY ACADEMIES	34.5%	684	37.6%	39.7%	805	14.4%	-23.2%	3,119	\$ 764,572
TEXAS EMPOWERMENT ACADEMY	78.0%	132	67.6%	82.0%	155	70.1%	2.5%	-	-
TEXAS JUVENILE JUSTICE DEPARTMENT	*	*	*	100.0%	967	101.1%		-	-
TEXAS SAN MARCOS TREATMENT CENTER	*	*	*	100.0%	166	102.2%		-	-
TEXAS SCHOOL FOR THE BLIND & VISUALLY IMPAIRED	*	*	*	89.1%	56	78.7%		-	-
TEXAS SCHOOL FOR THE DEAF	*	*	*	73.9%	150	52.5%		50	\$ 14,690
TEXAS SERENITY ACADEMY (CONROE,TX)	99.2%	308	74.8%	100.0%	273	87.4%	12.6%	-	-
TEXHOMA ISD	67.4%	40	55.8%	69.6%	37	60.3%	4.5%	6	\$ 1,659
TEXLINE ISD	56.1%	56	74.3%	69.3%	54	78.5%	4.2%	-	-
THE BETA FOUNDATION	66.5%	33	17.5%	69.0%	44	20.6%	3.1%	105	\$ 28,210
THE BRAZOS SCH INQ & CREATIVITY	92.3%	158	59.3%	100.0%	193	66.3%	7.0%	11	\$ 3,226
THE BURKE FOUNDATION	*	*	*	100.0%	20	100.0%		-	-
THE CHILDREN'S SHELTER OF SAN ANTONIO	*	*	*	100.0%	103	114.0%		-	-
THE CHINQUAPIN SCHOOL	*	*	*	81.0%	42	60.1%		7	\$ 1,498
THE DEVEREUX FOUNDATION	*	*	*	100.0%	115	110.8%		-	-
THE EDUCATION CENTER	79.1%	123	61.5%	*	*	*		*	*
THE EDUCATIONAL RESOURCE CENTER ,INC	100.0%	293	101.0%	*	*	*		*	*
THE HIGH FRONTIER INC	*	*	*	100.0%	55	100.9%		-	-
THE LAWSON ACADEMY	*	*	*	100.0%	86	49.8%		35	\$ 10,399
THE RHODES SCHOOL	70.2%	372	67.1%	77.4%	452	85.0%	17.9%	-	-
The SAFE Alliance	*	*	*	100.0%	28	116.1%		-	-
THORNDALE ISD	52.6%	132	57.7%	51.7%	125	58.7%	1.0%	24	\$ 6,546
THRALL ISD	31.9%	85	63.0%	36.2%	91	51.5%	-11.5%	33	\$ 9,339
THREE RIVERS ISD	68.8%	188	55.6%	70.1%	227	71.4%	15.8%	-	-
THREE WAY ISD	79.7%	56	73.8%	73.2%	57	58.1%	-15.7%	12	\$ 3,162
THROCKMORTON ISD	63.5%	46	82.2%	66.2%	57	81.4%	-0.8%	-	-
TIDEHAVEN ISD	67.7%	245	52.3%	94.6%	364	52.7%	0.4%	120	\$ 33,825
TIMPSON ISD	67.1%	305	83.2%	85.4%	341	84.8%	1.6%	-	-
TIOGA ISD	39.7%	102	62.3%	43.6%	131	59.1%	-3.2%	24	\$ 6,809
TLC ACADEMY	48.6%	359	42.2%	50.7%	313	37.3%	-4.9%	275	\$ 78,073
TODAY'S HARBOR FOR CHILDREN	*	*	*	100.0%	59	19.0%		157	\$ 36,802
TOLAR ISD	28.4%	66	50.4%	38.3%	138	79.8%	29.4%	-	-
TOM BEAN ISD	46.3%	137	59.2%	50.0%	131	62.2%	3.0%	17	\$ 4,751
TOM GREEN JUVENILE CENT DETENTION CENTER	*	*	*	100.0%	10	85.4%		-	-
TOMBALL ISD	22.8%	1,017	41.7%	24.8%	1,255	42.2%	0.5%	829	\$ 238,455
TORNILLO ISD	100.0%	287	27.5%	100.0%	881	102.1%	74.6%	-	-
TRAVIS COUNTY JUVENILE PROBATION DEPARTMENT	*	*	*	100.0%	74	101.0%		-	-
TRENT ISD	53.6%	53	84.1%	75.0%	46	65.7%	-18.4%	3	\$ 844
TRENTON ISD	42.2%	111	68.3%	41.9%	136	76.9%	8.6%	-	-
TRINIDAD ISD	83.3%	83	71.9%	100.0%	107	69.9%	-2.0%	0	\$ 27
TRINITY BASIN PREPARATORY	89.3%	539	28.4%	91.5%	752	32.4%	4.0%	874	\$ 256,558
TRINITY ISD	76.6%	670	102.7%	77.6%	660	106.4%	3.7%	-	-
TROUP ISD	57.3%	473	111.2%	56.9%	407	92.6%	-18.6%	-	-
TROY ISD	51.0%	301	51.8%	56.5%	340	54.9%	3.1%	94	\$ 26,909
TULIA ISD	77.2%	426	64.2%	80.1%	390	63.0%	-1.2%	44	\$ 12,583
TULOSO-MIDWAY ISD	54.3%	1,218	98.0%	98.8%	2,330	98.6%	0.6%	-	-
TURKEY-QUITAQUE ISD	51.0%	47	57.6%	59.1%	53	54.5%	-3.1%	15	\$ 4,185
TWO DIMENSIONS PREPARATORY ACADEMY	94.7%	404	110.7%	94.0%	350	114.8%	4.1%	-	-
TYLER ISD	70.4%	4,590	44.7%	76.5%	4,997	48.1%	3.4%	2,269	\$ 663,964
UMEP, Inc.	28.9%	31	28.5%	30.5%	33	24.3%	-4.2%	62	\$ 17,432
UNION GROVE ISD	46.4%	113	46.3%	47.5%	120	50.0%	3.7%	48	\$ 13,444
UNION HILL ISD	67.9%	87	49.5%	59.1%	73	50.7%	1.2%	28	\$ 7,539
UNITED ISD	82.9%	18,921	69.1%	82.3%	19,302	72.7%	3.6%	-	-

District	2016-2017			2018-2019			Change in Ratio of SBP to NSLP Participation	Additional Students if 70% Met	Additional Dollars if 70% Met
	% FR Eligible	FR Breakfast ADP	FR Students in SBP per 100 in NSLP	% FR Eligible	FR Breakfast ADP	FR Students in SBP per 100 NSLP			
UNIVERSAL ACADEMY	89.6%	217	42.4%	98.3%	197	43.7%	1.3%	118	\$ 34,748
UNIVERSITY OF HOUSTON CHARTER	33.1%	17	43.1%	51.5%	21	34.9%	-8.2%	21	\$ 5,994
UNIVERSITY OF TEXAS AT AUSTIN	57.0%	65	46.3%	60.4%	74	53.1%	6.8%	24	\$ 6,656
UPLIFT EDUCATION-NORTH HILLS PREPARATORY	75.2%	3,722	42.8%	86.7%	4,673	44.5%	1.7%	2,682	\$ 749,815
UT TYLER INNOVATION ACADEMY	28.0%	39	*	*	*	*		*	*
UT Tyler University Academy	*	*	*	24.8%	29	*		*	*
UTD/CALLIER CENTER FOR COMMUNICATION DISORDERS	*	*	*	7.0%	9	80.0%		-	-
UTOPIA ISD	46.0%	34	55.0%	45.3%	34	50.6%	-4.4%	13	\$ 3,748
UVALDE CONS ISD	81.4%	1,440	50.6%	100.0%	2,393	75.1%	24.5%	-	-
VALENTINE ISD	71.7%	29	*	63.2%	22	*		*	*
VALLEY MILLS ISD	57.3%	139	52.1%	59.7%	132	55.3%	3.2%	35	\$ 10,199
VALLEY VIEW ISD-PHARR	85.8%	3,475	99.7%	95.8%	3,752	99.9%	0.2%	-	-
VALLEY VIEW ISD-VALLEY VIEW	46.0%	140	53.1%	51.3%	115	37.7%	-15.4%	98	\$ 28,349
VAN ALSTYNE ISD	29.9%	116	38.5%	25.8%	98	37.3%	-1.2%	86	\$ 24,229
VAN ISD	51.1%	451	49.5%	58.0%	454	49.9%	0.4%	183	\$ 52,619
VAN VLECK ISD	53.8%	330	83.1%	54.9%	460	107.4%	24.3%	-	-
VAN ZANDT COUNTY JUVENILE PROBATION DEPARTMENT	*	*	*	100.0%	11	103.0%		-	-
VANGUARD ACADEMY	82.2%	689	35.5%	86.2%	1,217	41.9%	6.4%	816	\$ 236,628
VARNETT SCHOOLS, INC. (THE)	85.8%	600	57.4%	90.2%	676	53.1%	-4.3%	216	\$ 63,102
VEGA ISD	34.3%	66	94.5%	36.5%	46	84.6%	-9.9%	-	-
VENUS ISD	72.9%	799	62.7%	75.3%	810	60.5%	-2.2%	128	\$ 35,619
VERIBEST ISD	48.8%	56	51.2%	45.0%	47	47.1%	-4.1%	23	\$ 6,203
VERNON ISD	61.2%	713	76.2%	67.2%	758	82.0%	5.8%	-	-
VICTORIA COUNTY JUVENILE JUSTICE CENTER	*	*	*	100.0%	47	101.0%		-	-
VICTORIA ISD	66.2%	2,736	39.6%	66.3%	2,653	40.8%	1.2%	1,903	\$ 542,709
VIDOR ISD	50.1%	1,152	60.7%	100.0%	1,706	58.2%	-2.5%	344	\$ 102,297
VILLAGE TECH SCHOOL	32.7%	13	22.4%	*	*	*		*	*
VYSEHRAD ISD	45.7%	25	54.7%	50.8%	24	43.7%	-11.0%	14	\$ 4,121
WACO ISD	83.5%	6,438	61.0%	99.7%	7,571	59.3%	-1.7%	1,364	\$ 402,512
WAELDER ISD	89.7%	107	48.5%	100.0%	152	57.6%	9.1%	33	\$ 9,199
WALCOTT ISD	61.6%	66	93.3%	63.9%	64	78.3%	-15.0%	-	-
WALIPP PREPARATORY ACADEMY	100.0%	92	56.0%	*	*	*		*	*
WALL ISD	17.3%	66	49.7%	19.4%	82	49.6%	-0.1%	34	\$ 9,985
WALLER ISD	66.3%	1,793	50.9%	69.3%	1,967	54.8%	3.9%	547	\$ 157,702
WALNUT BEND ISD	100.0%	65	103.5%	76.5%	51	95.3%	-8.2%	-	-
WALNUT SPRINGS ISD	86.4%	103	75.0%	98.9%	105	67.7%	-7.3%	4	\$ 1,053
WARREN ISD	51.8%	384	86.5%	57.1%	405	81.4%	-5.1%	-	-
WASKOM ISD	62.3%	174	41.2%	68.7%	183	43.4%	2.2%	112	\$ 31,500
WATER VALLEY ISD	58.9%	98	64.8%	51.7%	80	59.1%	-5.7%	15	\$ 3,964
WAXAHACHIE ISD	48.5%	1,326	44.9%	48.1%	1,335	41.5%	-3.4%	917	\$ 247,579
WAYSIDE SCHOOLS	57.2%	182	30.8%	63.9%	254	42.4%	11.6%	165	\$ 43,999
WEATHERFORD ISD	45.8%	978	42.4%	48.4%	963	44.2%	1.8%	562	\$ 159,937
WEBB CONS ISD	75.4%	132	64.5%	97.0%	201	93.3%	28.8%	-	-
WEIMAR ISD	55.3%	107	47.1%	61.6%	122	47.1%	0.0%	59	\$ 17,137
WELLINGTON ISD	58.8%	111	43.1%	61.9%	126	51.7%	8.6%	45	\$ 12,778
WELLMAN-UNION CISD	64.8%	83	54.5%	60.3%	60	41.2%	-13.3%	42	\$ 11,653
WELLS ISD	67.7%	101	68.8%	66.6%	82	60.8%	-8.0%	12	\$ 3,495
WESLACO ISD	99.2%	12,370	96.3%	100.0%	11,802	97.9%	1.6%	-	-
WEST DALLAS Community School	*	*	*	71.1%	74	45.7%		39	\$ 10,507
WEST HARDIN COUNTY CONS I	52.9%	138	59.9%	64.2%	190	73.7%	13.8%	-	-
WEST HOUSTON CHARTER ALLIANCE, INC.	17.3%	29	40.0%	*	*	*		*	*
WEST ISD	46.6%	208	52.3%	36.3%	216	59.9%	7.6%	36	\$ 9,860
WEST ORANGE-COVE CONS ISD	89.9%	1,428	84.3%	94.2%	1,341	80.0%	-4.3%	-	-
WEST OSO ISD	87.9%	860	59.9%	100.0%	1,243	77.2%	17.3%	-	-
WEST RUSK ISD	77.4%	369	59.1%	91.3%	688	96.4%	37.3%	-	-
WEST SABINE ISD	75.9%	221	55.6%	78.8%	188	52.0%	-3.6%	65	\$ 18,452
WESTHOFF ISD	63.9%	37	95.6%	70.9%	50	96.5%	0.9%	-	-

District	2016-2017			2018-2019			Change in Ratio of SBP to NSLP Participation	Additional Students if 70% Met	Additional Dollars if 70% Met
	% FR Eligible	FR Breakfast ADP	FR Students in SBP per 100 in NSLP	% FR Eligible	FR Breakfast ADP	FR Students in SBP per 100 NSLP			
WESTPHALIA ISD	24.4%	6	20.0%	20.1%	4	14.0%	-6.0%	16	\$ 4,160
WESTWOOD ISD	85.6%	718	69.2%	81.9%	665	74.2%	5.0%	-	-
WHARTON ISD	86.7%	637	49.1%	100.0%	615	43.5%	-5.6%	374	\$ 108,577
WHEELER ISD	53.9%	121	67.8%	59.4%	115	66.9%	-0.9%	5	\$ 1,489
WHITE DEER ISD	50.4%	81	60.8%	52.8%	84	62.5%	1.7%	10	\$ 2,858
WHITE OAK ISD	42.5%	199	44.1%	39.7%	175	42.8%	-1.3%	111	\$ 31,331
WHITE SETTLEMENT ISD	59.0%	1,099	36.4%	55.6%	1,123	36.0%	-0.4%	1,059	\$ 297,669
WHITEFACE CONS ISD	55.6%	160	120.1%	55.4%	148	124.9%	4.8%	-	-
WHITEHOUSE ISD	43.8%	831	57.7%	45.3%	968	61.9%	4.2%	126	\$ 36,694
WHITESBORO ISD	59.5%	375	47.3%	59.3%	413	53.6%	6.3%	126	\$ 34,774
WHITEWRIGHT ISD	45.7%	162	61.1%	47.0%	152	58.5%	-2.6%	30	\$ 8,330
WHITHARRAL ISD	31.8%	12	27.4%	49.2%	20	35.2%	7.8%	19	\$ 5,675
WHITNEY ISD	61.7%	398	55.4%	63.4%	390	58.2%	2.8%	79	\$ 22,783
WICHITA FALLS ISD	61.7%	3,937	60.7%	62.5%	4,149	62.5%	1.8%	500	\$ 141,526
WILDORADO ISD	30.5%	16	76.2%	27.1%	19	63.8%	-12.4%	2	\$ 507
WILLIAMSON COUNTY JUVENILE SERVICES	*	*	*	85.2%	45	95.9%		-	-
WILLIS ISD	60.9%	2,309	68.0%	61.8%	2,399	66.7%	-1.3%	118	\$ 33,064
WILLOW BEND CENTER	*	*	*	100.0%	37	103.0%		-	-
WILLS POINT ISD	65.5%	575	51.7%	66.9%	624	50.5%	-1.2%	241	\$ 67,590
WILSON ISD	83.9%	82	103.2%	100.0%	70	85.9%	-17.3%	-	-
WIMBERLEY ISD	23.3%	144	34.0%	33.2%	188	37.7%	3.7%	161	\$ 45,828
WINDTHORST ISD	43.3%	47	41.6%	44.2%	57	52.7%	11.1%	19	\$ 5,245
WINFIELD ISD	91.9%	119	80.9%	*	*	*		*	*
WINK-LOVING ISD	36.0%	48	49.8%	43.1%	48	42.5%	-7.3%	31	\$ 8,749
WINNSBORO ISD	55.9%	245	44.6%	55.5%	256	45.8%	1.2%	135	\$ 39,037
WINONA ISD	72.6%	415	73.5%	94.9%	509	67.0%	-6.5%	23	\$ 6,358
WINTERS ISD	80.1%	352	92.9%	76.4%	326	94.4%	1.5%	-	-
WODEN ISD	55.0%	148	41.1%	60.1%	187	48.4%	7.3%	84	\$ 23,510
WOLFE CITY ISD	58.8%	175	61.7%	62.7%	197	63.9%	2.2%	19	\$ 5,193
WONDERLAND EDUCATIONAL ESTATE ASSOCIATION, INC.	73.8%	92	45.1%	94.0%	140	49.3%	4.2%	59	\$ 17,164
WOODSBORO ISD	61.0%	136	76.7%	100.0%	259	104.5%	27.8%	-	-
WOODSON ISD	61.0%	87	130.7%	63.9%	81	129.3%	-1.4%	-	-
WOODVILLE ISD	67.9%	540	71.8%	100.0%	807	75.1%	3.3%	-	-
WORTHAM ISD	54.3%	91	47.5%	69.9%	87	42.9%	-4.6%	55	\$ 15,910
WYLIE ISD-ABILENE	19.7%	225	72.6%	24.8%	279	37.9%	-34.7%	237	\$ 70,034
WYLIE ISD-WYLIE	27.6%	1,326	46.5%	28.3%	1,430	44.9%	-1.6%	802	\$ 226,944
YANTIS ISD	55.7%	140	94.0%	65.8%	147	98.4%	4.4%	-	-
YELLOWSTONE ACADEMY	*	*	*	77.1%	165	95.0%		-	-
YELLOWSTONE EDUCATION FOUNDATION	*	*	*	90.6%	125	75.3%		-	-
YES PREP PUBLIC SCHOOLS, INC.	86.6%	1,309	22.5%	99.8%	1,700	24.1%	1.6%	3,238	\$ 935,630
YOAKUM ISD	77.3%	614	67.9%	100.0%	792	68.2%	0.3%	21	\$ 5,978
YORKTOWN ISD	66.2%	71	36.6%	90.6%	114	42.0%	5.4%	76	\$ 21,851
YOUTH AND FAMILY ENRICHMENT CENTERS, INC	*	*	*	100.0%	22	103.0%		-	-
YOUTH CENTER OF THE HIGH PLAINS	*	*	*	100.0%	51	100.7%		-	-
YSLETA ISD	84.1%	21,516	93.0%	85.3%	21,013	92.9%	-0.1%	-	-
ZAPATA ISD	90.1%	1,482	59.6%	100.0%	1,673	62.3%	2.7%	207	\$ 59,373
ZAVALLA ISD	66.4%	59	34.5%	73.9%	95	59.2%	24.7%	17	\$ 5,037
ZEPHYR ISD	67.1%	59	61.3%	64.5%	55	51.5%	-9.8%	20	\$ 5,664
ZOE LEARNING ACADEMY	100.0%	226	73.2%	*	*	*		*	*

References

- ¹ No Kid Hungry. (2020). Micro-Report: Chronic Absenteeism.
http://bestpractices.nokidhungry.org/sites/default/files/2020-01/Chronic_Absenteeism_Micro_Report_No_Kid_Hungry.pdf
- ² Hartline-Graft, H. (2014). Breakfast for health. Retrieved from
<http://frac.org/wp-content/uploads/2011/08/breakfastforhealth.pdf>
- ³ Hayes, T. O. & VanHorn, M. (2021). Executive Summary: Health and Education Impacts of the School Breakfast Program and National School Lunch Program. American Action Forum.